



MIDWINTER

JANUARY 17- 22, 2017
SAN ANTONIO, TX

**A BETTER WORLD.
SINGING.**



7,000-SEAT VENUE DESIGNED FOR MUSIC.

YOU'VE
NEVER HEARD
BARBERSHOP
LIKE THIS.

JULY 2-9, 2017

AXIS THEATER, PLANET HOLLYWOOD
LAS VEGAS, NV



WWW.BARBERSHOP.ORG/VEGAS

WELCOME TO SAN ANTONIO



SKIPP KROPP
SOCIETY PRESIDENT

Welcome to the best
Midwinter in Society history!
I say that with confidence
because every Midwinter since the first one has
been more exciting than the prior one, and San
Antonio promises to maintain the tradition.

Be sure to enjoy the shows: the Youth Chorus Festival, the Seniors Quartet Contest, and the new Seniors Chorus Festival! Another event not to be missed is the terrific keynote address by a cappella guru and Honorary Member of the Barbershop Harmony Society, Deke Sharon, at 2:00 p.m. in the El Mirador at the Hilton. Most importantly, bask in the loving, caring environment generated by over 2,000 barbershop harmony lovers gathered here.

Thank you all for joining me as we "Make the Music that Makes a Difference" in San Antonio!

SCHEDULE OF EVENTS

TUESDAY January 17

MISC DISTRICT/SOCIETY LEADERSHIP MEETINGS & EARLY HOTEL CHECK-IN	AFTERNOON - EVENING	DOWNTOWN SAN ANTONIO
------------------------------------------------------------------	---------------------	----------------------

WEDNESDAY January 18

REGISTRATION/MARKETPLACE	9 AM - 6 PM	HILTON - SALON DEL REY
AHSOW ROOM	9 AM - 10 PM	HILTON - LA DUQUESA
HARMONY PLATOON	7 PM - 10 PM	HILTON - LA VISTA DEF
DISTRICT PRESIDENTS MEETING	8:30 AM - 9 PM	HILTON - LA VISTA ABC
AISQC BOARD MEETING	5 PM - 10 PM	HILTON - LA CONDESSA
AISQC CHORUS REHEARSAL	7 PM - 9 PM	HILTON - LA REINA

THURSDAY January 19

SOCIETY BOARD MEETING	7:30 AM - 2 PM	HILTON - LA VISTA
SCJC MEETING	8 AM - 7 PM	HILTON - STETSON
REGISTRATION/MARKETPLACE	9 AM - 6 PM	HILTON - SALON DEL REY
AHSOW ROOM	9 AM - MID'N	HILTON - LA DUQUESA
HARMONY PLATOON	10 AM & 1 PM	HILTON - EL MIRADOR
AISQC CHORUS REHEARSAL	10 AM - NOON	HILTON - LA REINA
*KEYNOTE ADDRESS BY DEKE SHARON	2 PM - 3 PM	HILTON - EL MIRADOR
HU CLASSES (SEE PAGE 13)	4 PM - 6:40 PM	HILTON - EL MIRADOR
THURSDAY NIGHT SHOW	7:30 PM - 10 PM	LILA COCKRELL THEATER
ALL-CHAPTER CHORUS REHEARSAL	10 PM - MIDNIGHT	LILA COCKRELL THEATER - ROOM 005
DIXIELAND BAND	AFTER SHOW	HILTON PALACIO DEL RIO

FRIDAY January 20

REGISTRATION/MARKETPLACE	9 AM - 6 PM	HILTON - SALON DEL REY
AHSOW ROOM	9 AM - MID'N	HILTON - LA DUQUESA
HU CLASSES (SEE PAGE 13)	9 AM - 11:30 AM	HILTON - EL MIRADOR
PHI MU ALPHA SING	10 AM - NOON	HILTON - LA VISTA AB
YOUTH & SENIORS CHORUS FESTIVAL - SESSION 1	11 AM - 4 PM	LILA COCKRELL THEATER
HU CLASSES (SEE PAGE 13)	3 PM - 4:50 PM	HILTON - EL MIRADOR
YOUTH & SENIORS CHORUS FESTIVAL - SESSION 2	5 PM - 10 PM	LILA COCKRELL THEATER
ALL-CHAPTER CHORUS REHEARSAL	10 PM - MIDNIGHT	LILA COCKRELL THEATER - ROOM 005

SATURDAY January 21

AISQC BREAKFAST AND ANNUAL MEETING	8 AM - 9:50 AM	HILTON - LA VISTA AB
AISQC LADIES BREAKFAST	8 AM - 9:50 AM	HILTON - RIVER'S EDGE CAFE
AHSOW GENERAL MEMBERSHIP MEETING	9 AM - 11 AM	HILTON - LA DUQUESA
REGISTRATION/MARKETPLACE	9 AM - NOON	HILTON - SALON DEL REY
HU CLASSES (SEE PAGE 13)	9 AM - 11:50 AM	LILA COCKRELL THEATER - RM 004
AHSOW ROOM	9 AM - MID'N	HILTON - LA DUQUESA
INT'L SENIORS QUARTET CHAMPIONSHIP	NOON - 5 PM	LILA COCKRELL THEATER
HU CLASSES (SEE PAGE 13)	NOON - 6 PM	HILTON - EL MIRADOR
ALL-CHAPTER CHORUS REHEARSAL	6 PM - 7:30 PM	LILA COCKRELL THEATER - RM 005
SATURDAY NIGHT SHOW	7:30 PM - 10 PM	LILA COCKRELL THEATER
PRESIDENT'S RECEPTION	10:30 PM - 1 AM	HILTON - SALON DEL REY

REGULAR CONVENTION EVENTS

MAIN EVENTS

HARMONY UNIVERSITY CLASSES

*ALL MAIN EVENTS WILL BE STREAMED ONLINE
MIDWINTERWEBCAST.COM

*THE KEYNOTE ADDRESS WILL BE AVAILABLE ONLINE
FOLLOWING THE CONVENTION.

FUTURE CONVENTIONS

WWW.BARBERSHOPORG/CONVENTIONS

LAS VEGAS

July 2-9, 2017



ORLANDO

July 1-8, 2018



SALT LAKE CITY

June 30-July 7, 2019



LOS ANGELES

June 28-July 5, 2020



In beautiful Costa Mesa, CA

with all performances in the incomparable
Renée and Henry Segenstrom Concert Hall.

January 16-21, 2018



Harmony University

All classes taking place
on the exquisite
Belmont University campus.

July 23-30, 2017 July 22-29, 2018

SPECIAL GUESTS

DEKE SHARON

WWW.DEKESHARON.COM

KEYNOTE SPEAKER

Thursday, 2-3 pm, Hilton El Mirador



We're extremely excited that Deke Sharon, Honorary Lifetime Member of the BHS and Godfather of Contemporary A Cappella, is back with us again at Midwinter, this time delivering the **Keynote Address** which you will absolutely not want to miss.

Deke's latest project, *In Transit: The A Cappella Musical*, is appearing on Broadway and is just the latest triumph in long series of successes including being musical director and arranger for the *Pitch Perfect* movies, producer of *The Sing-Off* on NBC, and a veteran performer and manager for many illustrious a cappella groups.

As the New York Times says, "With each new step on his journey to bring 'harmony through harmony,' Deke has been expanding broad public interest in music without instruments, and more importantly, 'harmony through harmony.' As collaborator Kristin Anderson-Lopez said: 'He truly believes that groups of people singing together creates goodness in the world. And at this moment in time, we really need that kind of harmony.'"

FRANCISCO NÚÑEZ

WWW.FRANCISCOJNUNEZ.COM

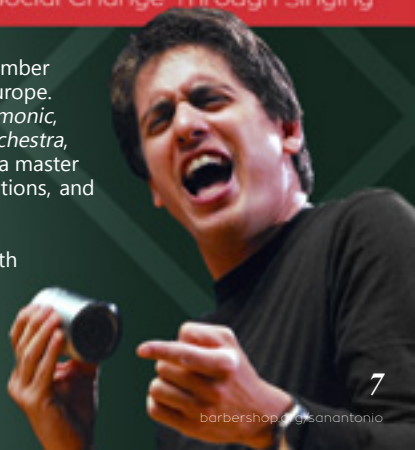
We are incredibly fortunate this year to have with us the Artistic Director/ Founder of the *Young People's Chorus of New York City* and Conductor of the *University Glee Club of New York City*.

Francisco J. Núñez is sought after as a guest conductor by professional orchestras, chamber ensembles, and choirs in North America and Europe. Among them, the *New York Pops*, *Manhattan Philharmonic*, *Newfoundland Symphony*, the *Geneva Chamber Orchestra*, and the *Chamber Orchestra of San Antonio*, as well as a master teacher and advisor for choral workshops, demonstrations, and festivals.

He joins us this week as the guest clinician for the Youth Chorus Festival and will also be teaching a class on Saturday at 9am entitled *Social Change Through Singing* which will explore ways that young lives can be transformed through the power of music.

GUEST DIRECTOR AND EDUCATOR

Youth Chorus Festival Guest Clinician
HU: 'Social Change Through Singing'



GENERAL INFORMATION

PHARMACY

CVS on the Riverwalk:
300 E Commerce St,
San Antonio, TX 78205

WHEELCHAIR/ SCOOTER RENTAL

Scotaround: (888) 441-7575

HOSPITAL

Nix Medical Center
414 Navarro St.
San Antonio, TX 78205

LOST & FOUND

Hilton Palacio Del Rio Front Desk:
(210) 222-1400
Lila Cockrell Theater: (210) 207-7773

WEBCAST
midwinterwebcast.com

CREDIT & THANKS

CONVENTION CHAIRMAN	John Schneider
ASST. CHAIRMAN	Nick Schwob
VOLUNTEER COORDINATOR	Jack Stevens
COMPETITOR COORDINATOR	Bob Ray
REGISTRATION COORDINATOR	Gary Hannah
JUDGES SERVICES COORDINATOR	Randy Rensi
BACKSTAGE ASST.	Tom Burson

CONTEST & FESTIVAL JUDGES

CONTEST ADMINISTRATORS	Chris Buechler (MAD) Woody Woods (RMD)
MUSIC JUDGES	Steve Armstrong (ONT) Kevin Keller (CSD) Paul Wigley (LOL)
PERFORMANCE JUDGES	Mark Kettner (DIX) Mike Louque (CSD) Barry Towner (ONT)
SINGING JUDGES	Rik Johnson (MAD) David Mills (NSC) Jordan Travis (ONT)

For more information on the
Contest & Judging System, visit
www.barbershop.org/contest.

FOLLOW US



CONVENTIONMAP



IN PARTNERSHIP FROM A GENEROUS GRANT OF
HARMONY FOUNDATION INTERNATIONAL,
WE'VE CREATED THE BARBERSHOP HARMONY SOCIETY'S



HERE'S A GLIMPSE OF WHAT WE'VE DONE IN 2016:

UPDATED & REVISED THE
ONLINE BHS DOCUMENT
CENTER.

**GENERATED NEW ONLINE
TRAINING VIDEOS** TO COVER
THE "BASICS" OF CHAPTER
LEADERSHIP AS A CHAPTER
PRESIDENT, SECRETARY, AND
TREASURER.

**COMMISSIONED 15 CERTIFIED
LEADERSHIP FACILITATORS**
TO SERVE AS A COMMUNITY
OF TRAINED EXPERTS.

COMING TO CHAPTERS IN 2017:

UPDATE OF ALL OF OUR
CURRENT CHAPTER
& DISTRICT TRAINING
MATERIALS.

**EASY ACCESS ONLINE
TRAINING** FOR OUR
ORGANIZATION LEADERS.

**WORK WITH EACH
CHAPTER AND DISTRICT**
TO SHARE BEST PRACTICES
TO FURTHER ADVANCE OUR
MISSION.

FOR MORE INFORMATION, VISIT
WWW.BARBERSHOP.ORG/HEALTHYCHAPTERS

IF YOU HAVE ANY COMMENTS OR QUESTIONS ABOUT THE HEALTHY CHAPTER
INITIATIVE, PLEASE CONTACT ANTONIO LOMBARDI, MANAGER OF CHAPTER
LEADERSHIP & EDUCATION | CHAPTERS@BARBERSHOP.ORG | 615-673-4136

MARKETPLACE

HOURS
WEDNESDAY-FRIDAY 9AM-6PM
SATURDAY 9AM-NOON

HILTON
SALON DEL RAY
(NEXT TO REGISTRATION)

BARBERSHOP WAY

HARMONY LN

**SHOPPING
SPREE!**

FRIDAY
2-4PM

**MEMBERS
GET
ADDITIONAL
5% OFF**

**MIDWINTER SHIRTS &
MEMORABILIA**

**BARBERSHOP
MERCHANDISE**

CLOTHING AND APPAREL

SHEET MUSIC

LEARNING TRACKS

DRINKWARE

SONGBOOKS

CDS

PITCH PIPES

MUSIC RESOURCES



\$20

\$15



\$5

\$15



\$50



\$17

**DEKE WILL BE
SIGNING COPIES OF
HIS BOOK ON
THURSDAY
AFTERNOON!**

SHOP.BARBERSHOP.ORG

Options for
Men
&
Women!

Be a part **JOIN US**



Joining the Barbershop Harmony Society will change your life.

barbershop.org/join

or visit our Membership Booth for more details



HU



IN SAN ANTONIO

CLASSES ON THURSDAY, FRIDAY, & SATURDAY

THURSDAY

January 19

SINGING 101 (4-4:50 PM)

Cliff Johnson

Hilton – El Mirador

Learn tips & techniques for better vocal production, including how to sound like you're singing in the shower!

TAKE A RISK! (5-5:50 PM)

Sandi Wright

Hilton – El Mirador

Some of our singers are natural risk takers, others have a more difficult time. This class helps you reach deep inside and learn to feel safe when performing from the heart.

AUTHENTIC PERFORMANCE

(6-6:50 PM)

Kohl Kitzmiller

Hilton – El Mirador

What can we do to open ourselves and our audience up to the magic of performance? This short course will address the mental barriers of performers such as confidence and vulnerability. A truly transcendent performance occurs when performers take off their armor to show their audience who they really are.

FRIDAY

January 20

TAG TIME! (9-9:50 AM)

Richard Frenette

Hilton – El Mirador

Start your day with some great tags, taught by the great Canadian tagmeister Richard.

TAKE A SONG FROM PAPER TO STAGE (10-11:30 AM)

John Santora

Hilton – El Mirador

This session shows how a quartet or chorus music team should take a piece of music and decide on the appropriate musical, emotional and storytelling message they want to convey, and how to get the singers to coalesce around that message. Walk through taking a song from paper to the stage.

PUBLISH OR PERISH (3-3:50 PM)

Scott Harris

Hilton – El Mirador

What is the process for getting a song published? Should I use an outside vendor or self publish? Spend some time and ask BHS staffer Scott Harris all this and more!

SURVIVAL TIPS FOR BARBERSHOP SINGERS (4-4:50 PM)

Debra Lynn

Hilton – El Mirador

This class will focus on tips to help everyone become a stronger singer. We will learn warm up techniques and other strategies to improve your vocal health and range... your voice should NOT be hoarse at the end of the rehearsal!



SATURDAY

January 21

SOCIAL CHANGE THROUGH SINGING

(9-9:50 AM)

Special Guest Clinician and Instructor

Francisco J. Núñez

Lila Cockrell Theater – Room 004

Seeking to further effect social change for young people among choral educators, Francisco J. Núñez has created an initiative for social change through the choral arts, a new venture that will bring together a small and specialized group of arts and music education leaders to examine ways of transforming young people's lives.

A LOOK BACK AT THE JUDGING OF BARBERSHOP CONTESTS

(10-10:50 AM)

David Wright and Kevin Keller

Lila Cockrell Theater – Room 004

A historical review of how barbershop contests have been adjudicated, going back to pre-Society days. We'll look at the 5-category system, SAI's 4-category system, BHS's 4-category system, and the current BHS system, and how they came to be.

GOLD MEDAL HOUR (11-11:50 AM)

ForeFront, 2016 International Champion

Lila Cockrell Theater – Room 004

Spend 50 minutes with our 2016 quartet champs, ForeFront, as they talk about their journey to the gold, as well as silver linings along the way. During this class they will sing and take questions from the audience!

BREAKING THE MYTH THAT MIXED BARBERSHOP IS A DIFFERENT BALLGAME (12-12:50 PM)

New Life, Mixed Quartet From Germany

Hilton – El Mirador

This class is led by New Life, a mixed quartet from Germany. Through performance and discussion, this active mixed group will show how many similarities there are between mixed Barbershop singing and the other, more familiar, forms of Barbershop, and provide some tips for getting started.

CLASSIC TAGS! (1-1:50 PM)

Don Barnick

Hilton – El Mirador

Spend a bit of your afternoon with 2-time quartet gold medalist and prolific tag-teacher Don! He will be kicking it old-school with juicy tags from the past that have stood the test of time!

MARKETING TO THE SINGER OF TODAY (2-2:50 PM)

Sandi Wright

Hilton – El Mirador

Does your chorus attract singers under 30 years old? Are you looking for new members in a new way? A "get real" look at what attracts members, what pushes their buttons and what doesn't. A good general membership class, with specific application for (but not limited to) marketing and membership coordinators.

THE DIFFERENCES AND SIMILARITIES BETWEEN THE FOUR- AND THE THREE-CATEGORY SYSTEMS (3-3:50 PM)

Sandi Wright

Hilton – El Mirador

Whether you are a member of Barbershop Harmony Society, Harmony Incorporated, Sweet Adelines International, or members of the worldwide barbershop community there are subtle differences in the competition game. The Four Category System (Sound, Music, Expression and Showmanship) is used by Sweet Adelines International and the Three Category System (Singing, Music and Performance) is used by Barbershop Harmony Society, Harmony Incorporated, BinG!, BABS, LABS, SNOBS, and most everyone else. There are MANY similarities. There are some significant differences.

INSIDE A BUZZ REHEARSAL (4-4:50 PM)

The Buzz, 2005 International S.A.I. Champion

Hilton – El Mirador

Watch as "the Buzz" conducts a typical rehearsal and shares insights into effective quartet rehearsal. Topics covered include: music selection, taking a song from paper to performance, dissecting a song and putting it back together again and how to give and receive constructive criticism.

THE ROAD TO GOLD! (5-5:50 PM)

Pratt Street Power, 2016 International Youth Quartet Champion

Hilton – El Mirador

The road to gold was not built on forming a "super" quartet with rock star singers. Instead, four friends with a love of barbershop worked hard and raised their score from a qualifying 72 and a few months later won it all with an 82! Learn how!

THURSDAY NIGHT SHOW

THURSDAY, January 19
LILA COCKRELL THEATER, 7:30PM

AISQC CHORUS

ASSOCIATION OF INTERNATIONAL
SENIORS QUARTET CHAMPIONS

Our champions from the Seniors Quartet Contest from over the years gather together to help kick off an incredible lineup of performances. Our most recent seniors champ quartet *High Priority* will close out the set.



AISQC.COM



BOARDWALKQT.COM

BOARDWALK

2016 INTERNATIONAL QUARTET
QUARTERFINALIST

Brad Hine, Mark Schlinkert, David Calland, Jared Carlson

Always in demand, Boardwalk has been one of the Society's busiest quartets, entertaining audiences all over the country. We're excited that they're bringing their unique and entertaining style of harmony and humor to San Antonio.

PRATT STREET POWER

2016 INTERNATIONAL YOUTH QUARTET CHAMPION

**Vincent Sandroni, Ed Schubel, Ben Hawker,
Darren Schmidt**

Once you hear them, you'll understand why the word *Power* is in their name. Originating from Baltimore, MD, Pratt Street Power wowed a full house at the world-class Schermerhorn Symphony Center in Nashville, TN to become the 2016 International Youth Barbershop Quartet Champion.

PRATTSTREETPOWER.COM



SHARE THE WEBCAST
MIDWINTERWEBCAST.COM

THURSDAY NIGHT SHOW

CONTINUED...

SHARE THE WEBCAST
MIDWINTERWEBCAST.COM

THE BUZZ

2005 SWEET ADELINES INTERNATIONAL CHAMPION

Nancy Cloeter, Debbie Cleveland, Karen Breidert, Jeannie Froelich

We are incredibly honored to have the legendary and incomparable 2005 Queens of Harmony with us at Midwinter this year. The Buzz has been consistently setting new standards in vocal and performance excellence ever since they formed in 2003 and we're thrilled to have them with us this week. Aside from what promises to be a fantastic performance this evening, they'll also be teaching a class 'Inside A Buzz Rehearsal' on Saturday that you won't want to miss.



THEBUZZQUARTET.COM 



MAINSTREETQT.COM 

MAIN STREET

2016 THIRD PLACE BRONZE MEDALIST

Roger Ross, Tony De Rosa, Mike McGee, Myron Whittlesey

Main Street has been razzling *and* dazzling audiences all over the world since 2010 with unstoppable vocal prowess and transcendent dance moves that leaves both the audience and the quartet breathless. Always the consummate entertainers, we know you'll absolutely love what they bring to the stage.



SIGNATUREQUARTET.COM 

SIGNATURE

2016 FOURTH PLACE BRONZE MEDALIST

Will Rodriguez, Daniel Cochran, Matt Clancy, Dan Walz

One of the fastest rising stars in the Society, Signature blew the doors off the arena in Nashville this summer with incredible charts and a wall of sound that showcased lead Daniel Cochran's inspired voice. We can't wait to see what's in store for this phenomenal young quartet.



CHILDRENSCHORUSSA.ORG 

THE CHILDREN'S CHORUS OF SAN ANTONIO

featuring Madison High School's Kantorei

Founded in 1983, the Children's Chorus of San Antonio is dedicated to enriching and expanding the experiences of young people through choral singing and musical performance. We're especially grateful that they could join us this year and share their beautiful gift of music.

NEW CHARTS

AVAILABLE TO ORDER
IN THE MARKETPLACE

HILTON
SALON DEL RAY
(NEXT TO REGISTRATION)

IT'S THE SAME OLD SONG

FOUR TOPS
(ARR. STEVE TRAMACK)

ISN'T SHE LOVELY?

STEVIE WONDER
(ARR. MIKE MENEFFEE)

CHANGE THE WORLD

ERIC CLAPTON
(ARR. DEKE SHARON & DAVID WRIGHT)

THINKING OUT LOUD

ED SHEERAN
(ARR. KIRBY SHAW)

COME SEE
ALL THE
NEW CHARTS

THURSDAY NIGHT SHOW

CONTINUED...

SHARE THE WEBCAST
MIDWINTERWEBCAST.COM

FOUR VOICES

2002 INTERNATIONAL
QUARTET CHAMPION

**Lester Rector, Chad Guyton,
Brandon Guyton, Jayson VanHook**

Our 2002 International Champion Four Voices hails from Cleveland, Tennessee. This foursome met as members of the internationally acclaimed Voices of Lee from Lee University. They are the first group in the history of the Society to win the prestigious gold medal in both the collegiate (1996) and International



FOURVOICESQUARTET.COM



men's competition. Known for their distinctive sound, exciting arrangements, and passionate delivery, Four Voices has performed in concert halls, corporate venues, on television, and in churches across the globe.



KEEPSAKE

1992 INTERNATIONAL QUARTET CHAMPION

Roger Ross, Joe Connelly, Tony De Rosa, Don Barnick

It's impossible to adequately express the impact that Keepsake has had on the Barbershop world over the past 25 years. Their musicality has been unparalleled, their performances have been virtuosic by any standard, their influence on countless singers has been indelible, and their repertoire has stood the test of time. It is a tremendous honor to have them with us at Midwinter as they celebrate their 25th year as champions.

FOREFRONT

2016 INTERNATIONAL QUARTET CHAMPION

**Drew Wheaton, Kevin Hughes, Aaron Hughes,
Brian O'Dell**

Forefront is enjoying their first major Society convention victory tour stop here in San Antonio since winning gold this past summer in Nashville. For the third year in a row, the newly crowned Barbershop Harmony Society International Quartet Champion contains a set of brothers, proving yet one more time that when it comes to lock and ring, family does indeed matter. Join us as we celebrate our new champs.

FOREFRONTQUARTET.COM





THE ASSOCIATION OF
INTERNATIONAL CHAMPIONS
AND THE BARBERSHOP HARMONY SOCIETY PRESENTS

PITCH PERFECTED

A CAPPELLA AT THE AXIS



THURSDAY, JULY 6, 2017
AXIS THEATER, PLANET HOLLYWOOD
LAS VEGAS, NV

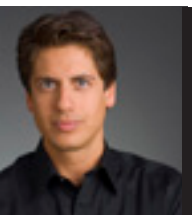
WWW.BARBERSHOP.ORG/AIC



NEW FOR 2017: THE INAUGURAL
SENIORS CHORUS FESTIVAL (SCF)

Performances from the Seniors Chorus Festival will take place intermittently among the youth choruses.

FRIDAY, January 20
LILA COCKRELL THEATER, 11AM



PRESENTER - FRANCISCO J. NÚÑEZ

We are delighted and honored to have Francisco J. Núñez join us as guest clinician for the Youth Chorus Festival. Francisco, a MacArthur “genius” fellow, is a conductor, composer, leading figure in music education, and the founder of the National Arts and Humanities Youth Program Award-winning Young People’s Chorus of New York City, renowned worldwide for its diversity and artistic excellence. Visit his website at franciscojnunez.com.

Youth and Seniors Chorus Plateau Criteria (by age):

A - 16 and under AA - 17 to 19 AAA - 20 to 25 SCF - over 55

SESSION ONE

1. Carol and the Belles (AAA)

UNIVERSITY OF LA VERNE
Directed by Carol Stephenson

3. Maidens & Men (A)

BRENHAM HIGH SCHOOL; BRENHAM ISD
Directed by Carol Perry
(certified BHS director since 2007)

2. Carolina Statesmen (SCF)

CAROLINAS DISTRICT
Directed by Mark Stock and Larry Triplett

4. The Maple Lead Chord Company (SCF)

ONTARIO DISTRICT
Directed by Ray Danley

YOUTH CHORUS FESTIVAL SPONSORS

We are grateful to the following people for their leadership and generosity as sponsors of the Youth Chorus Festival. Leadership, as you know, takes many forms. Each sponsor has contributed \$10,000 as an investment in the future of barbershopping. Join us in expressing gratitude when you see them!



Central States District
Far Western District
Land O' Lakes District
Friday Lunch Bunch
Mike and Sheila Deputy
Darryl and Meredith Flinn
Don Gray and Cindy Weygandt
Rick and Nancy Haines
Joe Jenkins and Barbara Bruning
Ross Johnson and Susan Williams
Randy and Stephanie Klopfleisch
Don and Lynn Lambert
Jerry and Pat Leslie
Randy and Jolene Loos
John and Sharon Miller
Mike and Lee Moisis
Joe and Jackie Palmquist
Pete and Sylvia Pifer
Dave and Barbara Riches
Erik and Nelleke Roffelsen
Doug and Lynn Weaver
Bill and Maxine Windnagle



YOUTH & SENIORS CHORUS FESTIVAL

CONTINUED...

SHARE THE WEBCAST
MIDWINTERWEBCAST.COM

5. MoWest Men (AA)

WEST HIGH SCHOOL FROM
MORRISTOWN, TN

Directed by Kathy C. Bowen

11. Harmonic Collective (AA)

SENECA LAND DISTRICT;
LIVERPOOL, NY CHAPTER

Directed by Sky Harris

[Find on Facebook](#)

6. Encore Accapella (A)

INDEPENDENT HOME SCHOOL PROGRAM

Directed by Terry Ghiselli

encoreyouthchorus.com

12. The Recruits (AA)

CENTRAL STATES DISTRICT;
ST. CHARLES, MO CHAPTER

Directed by Charlie Kinnison

7. Chandler HS Treblemakers (A)

CHANDLER HIGH SCHOOL FROM
CHANDLER, AZ

Directed by Lori Lyford

13. Good Life Chorus (AA)

PIUS X HS; COLUMBUS HS; EAST HS;
NEARBY COLLEGES

Directed by Todd Krier

SONG PREMIERE: **PRATT STREET POWER**

THINKING OUT LOUD
(arr. Kirby Shaw)

THERE WILL BE A BREAK
FOLLOWING THIS GROUP

**SESSION TWO WILL
BEGIN AT 5PM**

8. Foothills Sound (AA)

PRIMARILY POWELL HIGH SCHOOL JOINED
BY MEMBERS OF OTHER EAST TENNESSEE
SCHOOLS

Directed by Jim Kennedy and Lee Franks

14. The Voice (AAA)

AREA MIDDLE SCHOOLS, HIGH SCHOOLS,
AND UNIVERSITIES

Directed by Aaron Pollard

[Find on Facebook](#)

9. Evergreen Seniors Chorus (SCF)

EVERGREEN DISTRICT

Directed by Mel Knight and Charlie Metzger

15. East Coast Sound (AAA)

CALDWELL CHAPTER

Directed by David Ammirata

www.eastcoastsound.org

10. Georgia Spirit (AA)

DIXIE DISTRICT; ATLANTA METRO;
MARIETTA; GREATER ATLANTA

Directed by Clay Hine

16. Boomtown Chorus (AAA)

FAR WESTERN DISTRICT;
SANTA FE SPRINGS CHAPTER

Directed by Brett Littlefield

[Find on Facebook](#)



YOUR GIFTS *make a difference*

"They're not just some group at this school. They're almost like the star football team... when they come out and the audience cheers, it's like they're in the playoffs."

~JOHN WERNEGA, DIRECTOR, WILDCAT HARMONIZERS

The eight members of the Wildcat Harmonizers from Quinton Township, New Jersey have found their place at Quinton Township Middle School, and in January, they performed their way into the hearts of thousands at the Youth Chorus Festival. The group walked away with the title of Audience Favorite.

"It has always made me feel good when I feel sad," said Seven (pictured, second from left), a rising fourth grader who performs with the group.

Gifts to Harmony Foundation International make it possible for choruses such as the Wildcat Harmonizers to experience performance and competition, learn from others, and take their talents to the world.

Give now.

(615) 823-5611 • (866) 706-8021
hf@harmonyfoundation.org



YOUTH & SENIORS CHORUS FESTIVAL

CONTINUED...

SHARE THE WEBCAST
MIDWINTERWEBCAST.COM

17. Vocal Seniority (SCF)

JOHNNY APPLESEED DISTRICT

Directed by Doug Smeltz

23. Southwestern Vintage Voices (SCF)

SOUTHWESTERN DISTRICT

Directed by Artie Dolt

18. Southern Belles (A)

SWEET ADELINES REGION 10

Directed by Kathryn Dane

24. Sounds of the Mouth Women's Ensemble (AA)

SWEET ADELINES REGION 21;

MESA COMMUNITY COLLEGE

Directed by Mario Yniguez

19. Rowdy Rhythm (A)

PETERS TOWNSHIP HIGH SCHOOL

Directed by Ryan Perrotte

[Find on Facebook](#)

25. Cleveland Heights Men's Barbershoppers (AA)

CLEVELAND HEIGHTS HIGH SCHOOL

FROM CLEVELAND, OH

Directed by Jesse Lange

20. Chandler HS Men's Choir (A)

CHANDLER HIGH SCHOOL

FROM CHANDLER, AZ

Directed by Lori Lyford

SONG PREMIERE: FOREFRONT

ISN'T SHE LOVELY

(arr. Mike Menefee)

21. 52eighty (AAA)

DENVER MILE-HIGH CHAPTER; RMD

Directed by Johnny Bugarin and Keith Waldheim

22. Scarlet (AA)

SWEET ADELINES REGION 15;

SPIRIT OF SYRACUSE CHORUS

Directed by Sky Harris and Danielle Carter

ANNOUNCEMENT OF RESULTS:

ALL CHORUSES RECEIVING THE
"GOOD" RATING

ALL CHORUSES RECEIVING THE
"EXCELLENT" RATING

ALL CHORUSES RECEIVING THE
"OUTSTANDING" RATING

ALL CHORUSES RECEIVING THE
"SUPERIOR" RATING

THE PRESENTER'S AWARD

"AUDIENCE FAVORITE" AWARD

"GRAND CHAMPION"
SENIORS CHORUS AWARD

EVERY VOICE MATTERS

Even the smallest voice, speaking through
love, can be heard by the world.

*“Without music,
life would
be devoid of
beauty.”*

Joseph, age 17
scholarship recipient



In our cherished quartets and choruses, **every voice matters**, and the same is true when it comes to supporting efforts to help choral music thrive.

Gifts from individuals like you, who know first hand the magical feeling of that first harmony, make it possible to provide that experience to thousands.

Take your commitment to music, singing and barbershop one step further by supporting Harmony Foundation International. By making a gift of just \$10 per month, you will be recognized as an Ambassador of Song.

GIVE TODAY

harmonyfoundation.org
(615) 823-5611 | (866) 706-8021





INTERNATIONAL SENIORS QUARTET CONTEST

SATURDAY, January 21

LILA COCKRELL THEATER, NOON

With your Emcee Extraordinaire, Bob Cearnal

MIC TESTER: High Priority

2016 INTERNATIONAL SENIORS QUARTET CHAMPION

Ray Estes, Byron Bennett, Mark House, Dan Davenport

1. Highpoint (LOL)

GREENDALE, WI

Harry Hanson, Mike Ziegler, Darryl Cremer,
Bob Wozniak

4. Party of Five (MAD)

FRANK THORNE; HAMILTON SQUARE, PA;
HERSHEY, PA; PRINCETON, PA

Dane Marble, Brad Brooks, Ross Trube, Jeff Winik

2. Leftover Parts (SLD)

BATAVIA, NY; BUFFALO, NY; TORONTO, ON;
WARSAW, NY

Dennis Sokoloski, Bob Fuest, Ron Mason,
Lawrence Moss

5. On Q! (ONT)

CORNWALL, ON; GUELPH, ON;
HAMILTON, ON; TORONTO, ON

Richard Frenette, Bruce Marchant, John Wilkie,
Bill Vermue

3. Unfinished Business (JAD)

FRANK THORNE; GREATER CRANBERRY, PA;
INDEPENDENCE, OH

Dave McKinnon, Jeff Gehm, George Lepsch, Bob Godot

6. Papa Joe's (DIX)

ATLANTA METRO, GA; NASHVILLE, TN;
TUSCALOOSA, AL

Allen Reynolds, Ron Montgomery, Thomas Cain,
Michael Ezell

7. Youth Reclamation Project (MAD)

ALEXANDRIA, VA; RICHMOND, VA

Mike Wallen, Roger Tarpy, Hardman Jones,
Vic Owen, Jr.

8. Social Insecurity (EVG)

EUGENE, OR; SALEM, OR

Gary Raze, Kevin Stephens, Robert Martindale,
Marty Anderson

9. Time Bandits (CAR)

FRANK THORNE; LOUISVILLE, KY;

SOUTH BEND-MISHAWAKA, IN;

ST. CHARLES, MO;

WESTERN HILLS (CINCINNATI), OH

Ken Limerick, Marco Crager, Thomas Rouse,
Jay Hawkins

10. Easy Street (SUN)

TAMPA, FL

Paul Carter, Dave Cross, Charlie Nelson,
Bryan Hevel

11. Port City Sound (NED)

MANCHESTER, CT; PORTLAND, ME

Frederick Moore, Walter Dowling, Jim Curtis,
Jim Simpson

12. Velvet Frogs (FWD)

FULLERTON, CA; SANTA FE SPRINGS, CA;

SANTA MONICA, CA; SOUTH BAY, CA

Craig Ewing, David Livingston, CJ Sams, Jr.,
Bill Wilson

13. Senior Varsity (CSD)

KANSAS CITY, MO; SPRINGFIELD, MO;

ST. CHARLES, MO

Todd Keeley, Mike Dohogne, Jeff Veteto, Darrell Link

14. Rolls Voyce (PIO)

FLINT, MI; FRANK THORNE;

GROSSE POINTE, MI; MT. PLEASANT, MI;

PONTIAC, MI

Bruce LaMarte, TC Conner, David Gillingham,

Timothy Gerard

15. Spotlight (JAD)

BUCKEYE-COLUMBUS, OH;

GREATER CENTRAL OHIO;

SHENANGO VALLEY, OH; WILMINGTON, NC

Gary Wulf, Don Pullins, Matt Bridger, Dave Kindinger

16. Harmony Grits (NSC)

CHARLOTTE, NC;

RESEARCH TRIANGLE PARK, NC;

ROCKY MOUNT, NC; WINSTON-SALEM, NC

Steve Tremper, Walter Miles, Jim Nappier, Ted Leinbach

17. Fossil Creak (SWD)

FRANK THORNE; GREATER NEW ORLEANS, LA;

SOUTH TEXAS ALAMO REGIONAL, TX

Frank Friedemann, Art Swanson, Bill Wilkinson,
John White

18. St. Croix Crossing (LOL)

DUNN COUNTY, WI; FRANK THORNE;

GREATER ST. PAUL AREA, MN; HILLTOP, MN;

LA CROSSE, WI

Randy Lieble, Daniel Heike, Steve Hardy, Jared Hoke

19. Take Note (ILL)

CHICAGO NO. 1, IL; CHICAGOLAND WEST,
IL; NORTHBROOK, IL

**Rick Anthony, Ralph Brooks, Jr., Dick Kingdon,
Edward Chapman**

20. Fallcreek (LOL)

FARGO-MOOREHEAD, ND;
GREATER GRAND FORKS, ND

**Mark McLaurin, Mark Diers, Richard Derrick,
Kevin Dean**

21. Just the Ticket (RMD)

WASATCH FRONT, UT

**Ken Gilbertsen, David Thorell, Tom Dawson,
Lon Szymanski**

22. Trade Secret (NED)

PROVIDENCE, RI; WORCESTER, MA

**Bill Wright, Bob O'Connell, Ralph St. George,
Mike Maino**

23. Final Countdown (NSC)

CHARLOTTE, NC; ROCKY MOUNT, NC

Steve Curulla, Chuck Villier, Mark Rodda, Dale Comer

**24. Armchair
Chorderbacks (CSD)**

KANSAS CITY, MO

**Carter Combs, Mike Mathieu, Jim Bagby,
David Stockard**

25. Tall Boys (ONT)

BARRIE, ON; FRANK THORNE;
HAMILTON, ON; TORONTO, ON

Bill Wells, David Rozycki, Rob Lamont, Ted Church

SWAN SET PERFORMANCE:

HIGH PRIORITY

2016 INTERNATIONAL SENIORS QUARTET CHAMPION
Ray Estes, Byron Bennett, Mark House, Dan Davenport

High Priority formed in April, 2014 and in short order won the 2014 AZ & Far Western District Seniors Championship that fall. They went on to win the silver medal in 2015 in New Orleans at the International Seniors Quartet Contest, and just one year later they were finally crowned Seniors Quartet Champions at the 2016 Midwinter Convention in Reno.



ANNOUNCEMENT OF RESULTS



SATURDAY NIGHT SHOW

SATURDAY, January 21
LILA COCKRELL THEATER 7:30PM



ALL-CHAPTER CHORUS

Directed by Don Rose

Back by popular demand, the All-Chapter Chorus offers a fantastic way for our convention attendees to learn new music, work with world-class coaches, and share the stage with the rest of our incredible entertainment lineup at Midwinter.

THE NEWLY-CROWNED 2017 SENIORS QUARTET CHAMPION

COMBINED YOUTH CHORUS

Directed by Francisco J. Núñez

All of the Youth Chorus Festival participants' hard work this week will be on display in what is sure to be a memorable combined chorus performance under the direction of our illustrious guest clinician Francisco J. Núñez.



PRATT STREET POWER

2016 INTERNATIONAL YOUTH QUARTET CHAMPION

Vincent Sandroni, Ed Schubel, Ben Hawker, Darren Schmidt

SHARE THE WEBCAST
MIDWINTERWEBCAST.COM

barbershop.org/sanantonio



THE LADIES

2016 INTERNATIONAL SWEET ADELINES
RISING STAR CHAMPION

**Quincie Lauren Smith, Amanda McNutt, Kim Newcomb,
Ashley Brockman**

The Ladies formed in December 2015. Upon winning the Sweet Adelines Region 10 Young Women in Harmony contest, they earned the right to compete at the Rising Star competition in beautiful Auckland, New Zealand. They brought home the Rising Star championship and now they're sharing their talents with us at Midwinter.

THE NEWLY-ANNOUNCED "AUDIENCE FAVORITE" YOUTH CHORUS

BOARDWALK

2016 INTERNATIONAL QUARTET QUARTERFINALIST
Brad Hine, Mark Schlinkert, David Calland, Jared Carlson

THE BUZZ

2005 SWEET ADELINES INTERNATIONAL QUARTET CHAMPION
Nancy Cloeter, Debbie Cleveland, Karen Breidert, Jeannie Froelich

MAIN STREET

2016 THIRD PLACE BRONZE MEDALIST
Roger Ross, Tony De Rosa, Mike McGee, Myron Whittlesey

PFC (PREMIER AND FINAL CUT)

FROM MACARTHUR HIGH SCHOOL, SAN ANTONIO, TX

HARMONY FOUNDATION INTERNATIONAL PRESENTATION

FOUR VOICES

2002 INTERNATIONAL QUARTET CHAMPION
Lester Rector, Chad Guyton, Brandon Guyton, Jayson VanHook

FOREFRONT

2016 INTERNATIONAL QUARTET CHAMPION
Drew Wheaton, Kevin Hughes, Aaron Hughes, Brian O'Dell



July 23-30, 2017
July 22-29, 2018

REGISTRATION FOR
HARMONY UNIVERSITY 2017
IS NOW OPEN.

**IT'S THE BEST WEEK
OF BARBERSHOP, PEOPLE.
COME FIND OUT WHY.**



LOCATED ON THE BEAUTIFUL
BELMONT UNIVERSITY CAMPUS
IN NASHVILLE, TENNESSEE.

WWW.BARBERSHOP.ORG/HU

Thank you to our
2016 Volunteer Project Coordinator

**PETER
MCBRIDE**

proud member of

EVERGREEN

Peter lead the creation of a
membership communication campaign
for the Society.

**WOULD YOU LIKE TO
LEAD A PROJECT?**

If you have
experience in project management
and would like to lead projects
in 2017, please email:
Erin Harris, Director of Projects,
eharris@barbershop.org
with your interest!

Harmony Foundation International

wishes to thank our cherished donors.

The following pages list members of Legacy of Harmony, President's Council, and Ambassadors of Song. Thank you for making your voices heard with charitable support!

Legacy of Harmony (by district)

CARDINAL (F)-19 MEMBERS

Burgess, Jim
Butler, Jay and Garnet
Campbell, Bill and Phyllis
Carlton, Dick and Mary
DeBusman, Jim and Barb
Denton, Gary and Jeanette
Formsma, Jerry and Connie
Garitson, Gary and Linda
Gelb, Dave and Sharon
Hatton, Jerald and Adrienne
Henry, Duane and Micci
Richardson
Johnson, Harold and
Genevieve
Julian, Don
Kropp, Skipp and Nancy
McKay, George and Ethel
Nickoson, Ernie and Norma
Park, Larry and Mary Lou
Pizer, Larry and Linda
Robertson, Dave and Gale

CAROLINAS (Q)-14 MEMBERS

Clark, Bob
Comer, Dale and Lila
Dickson, Bob and Andria
Eaton, Dennis and Anne
Fowler, Jeff
Gilhousen, Larry and Julie
Howard, Marci
James, Jeff and Kathy
Mallett, Jim and Anne
Martin, Paul
Rose, Charlie and Elaine
Smith, Gary and Sarah Jane
Sweet, Tim and Kim
Walker, Jade

CENTRAL STATES (A)-28 MEMBERS

Barrows, Howard
Beckman, Dean and Nancy
Bittle, Ed and Barbara
Burdick, Bob and Sandy
Combs, Carter and Jeffi
Demaree, Gale and Helen
Edmondson, Gayle and
Patricia
Einess, Lud and Betty
Gannon, Tom and Marilyn

Green, Rich
Hokanson, David
King, Bob and Sharon
Leslie, Jerry and Pat
Marshall, John and Ronda
Mathieu, Mike and Jan
McLaurine, Bill and Kathy
Morden, Ron
Nau, Ev and Mary
Ninneman, Herm
Nugent, Jim and Audrey
Peterson, Jean
Purvis, Leonard and Sharon
Schulz, Dale and Sue
Sorge, Denny
Swenson, Bob and Telva
Tilson, Jeff and Kelly
Tisdall, Thom
Zelch, Ronald and Jan

DIXIE (B)-19 MEMBERS

Balsler, Bill
Caldwell, Clarke and Esther
Chambers, Dwain and Connie
Davenport, Charles and Liz
Cillo
Ely, Curtis and Shirley
Funderburg, Noah and Mary
Groat, Freeman
Jordan, Joy
Killeen, Ryan and Cyndi
Kinde, Wayne and Christa
Lord, Dick and Kathy
Rear, Ken
Sams, Jim and Doris
Selano, Jeff and Mary
Shelles, Dan and Linda
Stern, Steve
Stern, Owen
Warner, Ann and Jim
Woodridge, Bobby and Cathy

EVERGREEN (C)-23 MEMBERS

Ayers, Brian and Ann
Bejarana, Ed and Kay
Benson, Chuck
Betteley, Jim and Margaret
Betteley, Tom
Bray, Jerry and Mary
Condon, Tom and Janet
Cox, Bob and Suzanne
Crandall, Matt
Freedman, Laurence
Gates, Quentin and Judith
Gorsuch, George and Jane

Knight, Mel and Pat
Kropp, John and Sue
Lancot, Mike and Sue
McMullen, Dennis O.
McMullen
Mondau, Steve
Peters, Randy and Leslie
Cooke
Rettenmayer, John
Scheel, Larry
Spring-Barrett, Ellie
Stuart, Bryan
Swanson, Dick and Joan

FAR WESTERN (D)-51 MEMBERS

Abernathy, Patrick and Joyce
Ackers, Stan and Irene
Anderson, Jack
Aramian, Terry and Sandi
Barger, Sam
Benedict, Lou
Berghthold, Gordon and Betty
Bolles, Gary and Bridget Byrne
Briner, Dave
Byrd, Ron and Cecelia
Cale, Bill and Janet
Cudworth, Les
Custer, Ken
DeChaine, Jim and Delain
Donovan, Adam
Freedkin, Mark and Shellie
Hagerdon, Steve and Mary
Louise
Heron, Bob and Claire
Higgins, Tobey and Glen
House, Bob and Maryanne
Hunter, Chuck and Pat
Jones, Dick
Krizek, John and Kay
LaMontagne, J-P
Leggat, Don
Maislen, David and Joan
Mau, Al and Alice
Mayfield, Thomas
McDougal, Earl and Bev
Mikich, Karen
Miller, John and Sharon
Morgan, Bob and Hope
Morgan, Gene and Dianne
Morrow, Ralph and Zella
Newman, Joanne
Orloff, Kim
Palmquist, Joe and Jackie
Pio, Ed
Plum, David and Barbara

Raffety, Tom
Scoville, Deano and Ellie
Sellnow, Bruce and Nancy
Smith, Buz and Florine
Sponner, Bill and Vicki
Sundwall, Ken
Taylor, Kerm
Tieberg, Bill
Tinkle, Stan and Barbara
Turnmire, Jim
Wolter, Gordon and Helen
Woodard, Jack

ILLINOIS (E)-15 MEMBERS

Bodman, Richard and Karna
Brooks, Ralph and Mary
Cearnal, Bob and Jo Reed
Frisby, Owen and Dee
Graham, Dorothy
Kastens, Jules
Keller, Kevin
Kraatz, Celia
Lundberg, Bryan
Lundberg, Dave
Martin, Mike and Laura Lynn
Roos, Erik and Mildred
Schwimmer, Phil
Ward, Bill
Woodall, Tom and Margy

JOHNNY APPLESEED (G)-31 MEMBERS

Ayling, Ben and Mary Ann
Bernard, Bill and Jeannette
Bushong, Lane and Nancy
Crow, Walt and Barbara
Emmert, Tom and Lee
Flinn, Darryl and Meredith
Fultz, Don
Gentry, Tom
Gilman, Paul and Deb
Gray, Don and Cindy Weygandt
Hawkins, Tom and Mary Grace
Musuneggi
Hiner, DJ and Barbara
Hughes, Jerry
Jenkins, Joe and Barbara
Bruning
Jenkins, Lynn and Vera
Johnson, David and Jo Ann
Kelly, Patrick
Mandator, Jake and Pat
May, Ted
Moorehead, Bob and Edie
Mucha, Mooch and Wilma

(Donors as of December 6, 2016)

Nichol, Nic and Suzie
 Ramsey, Jim and Bette
 Riddick, Frank and Pat
 The Ritz Quartet
 Shandle, Cliff and Shirley
 Shisler, James
 Vockell, Dave and Stephanie
 Watson, Chuck and Mary Ann
 Watson, Doug and Carolyn
 Witmer, Joe

LAND O'LAKES (H)-37 MEMBERS

Barnard, Norm and Lynnette
 Batke, Rubin and Lani
 Borchardt, Cliff
 Christianson, Ken
 Clapper, Barry
 Dahlen, Mark
 Dawson, Paul and Kay
 Dolphin, Greg and Joan
 Dowma, Bob
 Dykstra, Bob and Lou Ann
 Dykstra, Paul and Karen
 Kracher
 Edgerton, Jack and Pat
 Endsley, Craig and Nancy
 Ewing, Red
 FLBTMOT
 Green, Charlie and Barb
 Green, Mary
 Hutton, Duane and Linda
 Lee, Jim and Linda
 Lidstad, Dick and Peg
 Liles, Joe and Kay
 Lynch, Brian and Laura Bothe
 Lyne, Greg
 McNaughton, David and Julie
 Miller, Doug and Connie
 Miller, John and Alice
 Nolan, Bob
 Orff, Judd and Angie
 Plazek, John and Jodee
 Rashleigh, Bill and Ann
 Schmid, Bill and Jeanne
 Smith, Ty and Judy
 Spong, Robert and Jean
 Staedt, Dick and Dawn
 Ward, Bill and Kim
 Zarling, Rudy
 Zimmerman, LeRoy and DiAnn

MID-ATLANTIC (J)-35 MEMBERS

Balderson, Robert
 Bermel, Pete and Bobbie
 Bloch, Raleigh and Jean
 Brown, Doug and Jill
 Buechler, Chris and Dixie
 Kennett
 Butterfield, Jay and Anne
 Calhoun, Mike and Nancy
 Lovalo
 Delehanty, Steve and Connie
 Evers, Bob and Jenny
 Fess, Ken and Kim
 Fetterolf, Howard and Sharon
 Geipel, Mike and Lennie
 Grant, John
 Harner, Chuck

Hawthorne, Jim and Pearl
 Hoge, Scott and Jan
 Hunter, Chuck and Ramadan
 Caysever
 Jones, Keith
 Keihm, Neil and Dottie
 Kempton, Dean and Marilyn
 Kunkel, Ed and Mildred
 Martin, Joe and Denise
 Miller, Keeth and Barbara
 Moreland, Bill and Mary
 Peck, Thomas L. Peck
 Powell, Dick and Roxanne
 Santora, John and Kathi
 Saunders, Jim and Joyce
 Schreiber, Don and Joannie
 Smith, Bruce and Jane
 Thompson, Donald
 Van Der Kolk, Don and
 Suzanne
 Watts, Dave
 Weber, John
 Wile, Alan and Patricia

NORTHEASTERN (K)-17 MEMBERS

Arnone, Paul and Carmen
 Carter, Phil and Janet
 D'Angio, Carl and Elin
 Di Stasi, Lew and Mary
 Fijak, Ted and Deanna
 Flom, Donald
 Jemison, Jack
 Jensen, Chris and Randy
 Rosette
 Johansen, Ernie and Connie
 Kilroe, Bob
 Lamson, Alan and Janet
 MacElwain, Dale
 McEndarfer, John
 McQueeney, Tom and Nan
 Silverstein, Renee
 Verba, Charley and Shelia
 Zimmering, Stan

PIONEER (I)-12 MEMBERS

Belanger, Jeff and Libby
 Berry, Earl and Mimi
 Bonney, Al and Joan
 Davidson, Roger and Dolores
 Dumbauld, Ted and Marilyn
 Duncel, Brian and Pat
 Fangert, Bob
 Hall, Chad
 Hanover, Gene
 Knapp, Phil and Margaret
 Lewis, Roger and Sue
 Weaver, Douglas and Lynn

ROCKY MOUNTAIN (S)-12 MEMBERS

Bell, Charley and Jeanine
 Biffle, Bill and Lillian
 Cook, Dennis and Terry
 Elliott, Richard
 Franklin, George and Sally
 Manion, John
 Mosser, Sandi
 Rosenkrans, Don and Mary

Rutkowski, Marv and Marilyn
 Schlappi, Marvin
 Wiese, Fred and Helen
 Wiesner, Del and Kay

SENECA LAND (M)-11 MEMBERS

Capenos, Warren
 Coant, Bob and Lynne
 Collins, Rick
 Eldridge, Jim and Becky
 Feldman, Bob
 Hopkins, Rob and Kris
 Jarrell, George
 Johnson, Barney and Michelle
 Lewis, David
 Nazzaro, Andy and Pat
 Wert, Chuck and Mary Ann

SOUTHWESTERN (N)-17 MEMBERS

Bierwagen, Don and Vivian
 Bobek, Jack
 Brown, Bob and Judy
 Cooper, Dwayne and Barbara
 Devine, John and Sherry
 Driscoll, Denny and Ann
 Ewing, David
 Fairchild, Maureen
 Hammer, Hank
 Lanning, Bob
 Monroe, Scott and Rhonda
 Parker, Gary and Ruth Ann
 Schneider, John and Lucy
 Schneider, Saul and Jennie
 Seay, Beverly
 Stone, Jim and Frances
 Westover, George and Karen

SUNSHINE (P)-53 MEMBERS

Allen, George and Dottie
 Anderson, Don and Ginny
 Astorino, Frank and Rose
 Accoin, Ed and Janet
 Austin, Gord
 Bellis, Anne
 Betsworth, Brian and Judith
 Boll, Bill
 Bowser, Bob and Judy
 Brinkmann, Dan and Barbara
 Brozovich, Wayne and Celeste
 Brutsman, Bob and Ellen
 Buckner, Ken and Hollie
 Carter, Al and Nancy
 Checca, Bruce
 Clause, Don and Nancy
 Cochrane, Bob and Linda
 Cullen, Bill and Ginger
 Fedel, Robert and Kay June
 Ferrigno, Bill and Ann
 Frobose, Jack and Helenanne
 Geers, Don
 Gehrlein, Jim and Susan
 George, Tony and Betty
 Greenfield, Jack and Phyllis
 Haley, Pat and Jan
 Hanrahan, Tim
 Haynes, Forry and Marcella
 Hesketh, Ron and Joyce

Himmelman, Don and Sue
 Jones, Steve
 Jones, Myrna
 Loos, Don
 Loos, Randy and Jolene
 Martin, Thomas and Norita
 Maynard, Art and Phyllis
 Williams
 McClean, Kent
 McCreary, Clare and June
 Northrop, Jim
 Page, Wayne and Kathy
 Parker, Dave and Marilyn
 Prickett, Sandy and Margie
 Ross, Roger
 Salladin, Scott
 Schubert, Dave and Karen
 Shaw, Dick and Nancy
 Spang, John and Ann
 Szabo, Burt
 Tarr, Ron and JoAnn
 Trammell, Park and Linda
 Weir, Doc
 Werner, Scott
 Wicker, Karen

FRANK THORNE (T)-6 MEMBERS

Kirkham, Chris and Heather
 Leitnaker, Frank and Christel
 Santarelli, Frank and Dorene
 Spieker, Roy and Ethel
 Thorn, Nancy
 White, Brett and Ruth

SING CANADA-10 MEMBERS

Arnold, Rob
 Ernest, Trinda
 Hartley, Doreen and Paul
 Tamblin
 Kercher, Ross
 MacDougall, Digger and
 Nancy
 Martens, Larry and Lise
 McTaggart, Doran
 Metzger, Charlie and Karen
 Rear, Ken and Sheila
 Smith, Ian and Wendy

President's Council (by district) © Charter Member

CARDINAL (F)-34 MEMBERS

Director level of Membership
 Formsma, Jerry & Connie
Advisor level of Membership
 Hutchison, Scott & Christy
 McAlexander, Brad & Ann
Counselor level of Membership
 DeBusman, Jim & Barb
 © Kropp, Skipp & Nancy
 Shank, Lowell & Darlene
Partner level of Membership
 Bjork, Dave & Carol
 Boatright, Jim & Carole
 Broadfoot, Jeff & Kathleen

Farris, Lois
 Geesa, Ben & Penny
 Gelb, Dave & Sharon
 Griggs, Phillip
 Grissom, James & Randi
 Haines, Doc & Babs
 Hawkins, Jay & Kathy
 Henry, Duane & Micci
 Richardson
 Higgins, Jim
 Hughes, Mike & Beth
 Johnson, Duane
 Kitzmiller, Scott
 Klein, Lawrence
 Korty, Allen
 Loveless, Dave
 McPherson, Steve & Vicki
 Pedowitz, Aaron & Jana
 Schladand, Charlie & Patsy
 Trout, Scott & Kim
 Troxel, Jerry & Pamela
 Wittgren, Bruce & Della
Ensemble of Excellence
level of Membership
Instant Classic
 Hicks, Theodore
 Kitzmiller, Kohl
 Kitzmiller, Kyle
 Zimmerman, Dave

CAROLINAS (Q)-35 MEMBERS

Advisor level of Membership

Leinbach, Ted & Margie
 Pope, Bill
 Tweed, Bob & Lorraine
Counselor level of Membership

© Mallett, Jim & Anne
 Rund, Robert

Partner level of Membership

Adams, John & Jean
 Andrus, Duke & Nancy
 Gourley
 Burns, Bob
 Clark, Bob
 Cluett, Wally & Elizabeth
 Davis, James & Michelle
 Doub, Joe & Juli
 Fannin, Jim
 Fowler, Jeff
 Gilhousen, Larry & Julie
 Gorman, Matthew
 Greene, Beverly
 James, Jeff & Kathy
 Kirchner, Pete
 Ley, Bryson & Marsha
 Martin, Paul
 Miles, Wally
 Moy, Roland & Barbara
 Nappier, Jim & Judy
 Partlow, Rex & Cindy
 Patrick, Jason & Heather
 Percy, Dick
 Rodda, Mark & Marcia
 Russell, Curtis
 © Smith, Gary & Sarah Jane
 League
 Stehlik, Mike & Susan
 Stewart, Wallace & Sonya

Stock, Mark
 Tremper, Steve
 Wood, Jerry

CENTRAL STATES (A)-51 MEMBERS

Advisor level of Membership

Bittle, Ed & Barbara
 Huyck, Rich
 Knight, Rich
 Moiso, Mike & Lee

Counselor level of Membership

Hagan, Don & Dottie
 Kiser, Harvey & Janet
 © Leslie, Jerry & Pat
 Louque, Mike & Bob Ayers
 Mathieu, Mike & Jan
 Myers, Tim & Leslie

Swenson, Bob & Telva
 Tisdall, Thom
 Woodhams, Nancy

Partner level of Membership

Bandy, Bruce & Leatte
 © Beckman, Dean & Nancy
 Brown, Ray
 Burbank, Wendell & Vona Ann
 Cox, Brad & Mary
 Dawdy, Brad
 © Edmondson, Gayle & Patricia

Erikson, Mark
 Fehlauer, Al & Maryellen
 Fortino, Mark & Sarah
 Fuson, Don & Linda
 Gannon, Tom & Marilyn
 Gray, Tom
 Hammel, David
 Ingrham, Jim & Jeri
 Jeppesen, Micah
 Kinzie, Leonard & Nancy

Wagner
 Krondak, Bill & Anita
 Latham, Win & Dawn
 Leslie, Bill
 Lusk, Roger & Lesa
 Malek, Jim & Mette
 Marshall, J.P.
 Marshall, John & Ronda
 Mathis, James & Jan
 Monson, Larry & LaVonne
 Petry, Michael & Laura
 Robb, Mark
 Rubin, Mike
 Satter, Bryan
 Schuerman, Bob & Nancy
 Scott, Ted
 Sents, Allan
 Updegrove, Don
 Warrick, Larry
 Weir, Randall
 Wright, David & Sandi
 Young, Denny & Anita

DIXIE (B)-64 MEMBERS

Advisor level of Membership

© Balser, Bill
 © Caldwell, Clarke & Esther
 Elenteny, Trayce & Ray
 Pifer, Peter & Sylvia

Counselor level of Membership

Brooks, Tim & Karen
 Campbell, Bart & Audrey
 Checkoway, Stanley & Lois
 D'Ambrosio, Steve
 Funderburg, Noah & Mary
 Hrach, Frank & Marilyn
 Jordan, Jori
 Martin, Ken & Scarlett
 Morrison, Terry & Vicki
 Royce, Dobbie
 © Sams, Jim & Doris
Partner level of Membership
 Abby, David & Barbara
 Banks, Bill & Verna
 Blazek, Paul & Lindy
 Bomben, Melissa & Heather
 McCue

Bookman, Laurie
 Bowman, Tony & Kathleen
 Coward, Andrew & Svetlana
 Davenport, Bob & Judy
 Davis, Marcie
 Dorn, Steve & Crystal
 Faulkenberry, Bret & Carolyn
 Fuller, Chris & Ruth
 Garrett, Charley
 Gonzalez, Marco
 Grevstad, Lars
 Groat, Freeman
 Hickman, Gayle
 Hine, Clay & Becki
 Hoffman, Jeffrey
 Holshouser, Tom & Sandra
 Holt, Eddie & Laura
 Holt, Sonny & Janet
 Joesten, Mel & Maribel
 Joslyn, George & Marianna
 Killeen, Ryan & Cyndi
 King, Shawn & Tamara
 Kuettnner, Mark
 Minor, Austin
 Montagne, Michelle
 Moore, Jim & Barbara
 Niec, Michele
 O'Neill, Mike & Jennifer
 Phillips, Bert & Susan
 Reynolds, George & Betty
 Semich, Dan & Dixie
 Siegel, Robert & Ann
 Smith, Bob & Pamela
 Smith, John & JoAnne
 Strong, Robert & Cyndi
 Sukoff, Richard
 Thomas, Harry
 Walsh, Mike & Patsy
 © Warner, Ann & Jim
 Wey, Sam
 Wietlisbach, Paul & Bridget
 Williams, Brian & Brenda
 Winfrey, Whit & Donna
 Wood, Susan
 Young, Ed

EVERGREEN (C)-34 MEMBERS

Advisor level of Membership
 Pope, Jeremiah & Melissa
Counselor level of

Membership

Aitkins, Dick & Gayle
 Mitchell, Bob
Partner level of Membership
 Aguayo, Carlos & Clara
 Ayers, Brad & Arla
 Ayers, Brian & Ann
 Hrach, Neal & Katherine
 Brumfield, Bill & Vicky
 Bryan, Hayes & Patsy
 Caldwell, Karen
 Centamore, John
 Con, Aaron & Queenie
 Cox, Bob & Suzanne
 Gysler, Carl
 Harrison, Jerry
 Jones, Antoine
 Kahlke, James & Vickie
 Kelly, Michael & Jen
 Mattson, Kevin & Julie
 Mondau, Steve
 Nowik, George
 Olson, Chuck & Bev
 Osterman, Larry & Valorie
 Parkinson, Bob & Linda
 Peters, Ernie
 Picciocco, Matthew & Stephanie
 Renschler, Chuck & Gloria
 Rettenmayer, John
 Rickertsen, NaVon & Maureen
 Tabares, Travis & Nikki
 Blackmer
 Terrill-Nitz, Robert
 Thorn, Don
 Wermes, Len & Linda
 Williams, Don

FAR WESTERN (D)-145 MEMBERS

Chairman level of Membership

© Miller, John & Sharon
 Panlaqui, Clayton & Carol
 Spooner, Bill & Vicki
Director level of Membership
 Hagerdon, Steve & Mary
 Louise

Advisor level of Membership

© Bolles, Gary & Bridget
 Byrne
 Briner, Dave
 © Cale, Bill & Janet
 Clock, Lynn
 Cowan, David & Nathalie
 DeChaine, Jim & Delain
 Faulkner, Bill & Sue
 © Heron, Bob & Claire
 Klopfeisch, Randy & Stephanie
 Meyer, Randy & Diane
 Ridout, Phil & Karen
 Turnmire, Jim
Counselor level of Membership
 © Anderson, Brent & Sue
 © Barger, Sam
 Bennett, Pete & Shirley
 Collom
 Hill, Charlie

© Hunter, Chuck & Pat
 Kline, James & Marlene Siravo
 Leedom, Jim & Susan
 Loftus, John
 McLees, Curt & Nancy
 Newlove, Jim & Janice
 O'Brien, Emily
 Poll, David
 Rague, Gene
 Shreve, Mark & Charlene
 Tillmanns, Ken
 Wolter, Al & Donna
Partner level of Membership
 Ackers, Stan & Irene
 Addison, Tom & Kathleen
 Ashkenasy, Lance & Diana
 Avidor, Amnon
 Bender, Cort & Annette
 Benedict, Lou
 Berghold, Gordon & Betty
 Beviitt, Chuck
 Bishop, Steve & Jackie
 Bizzigotti, Ray
 Black, Ron & Joanne
 Breen, Jay & Susan
 Briggs, Ken
 Brilhante, Ollie
 Brown, Ross
 Bunker, Steve & Sophia
 Momand
 Bunting, Bruce
 Campbell, James
 Carlson, Alex
 Carlson, Norm
 Chase, Bill & Burma
 Clements, Gene
 Conlan, Don & Marilyn
 Cudworth, Les
 Curl, Kent
 Day, Ken
 DeLong, Dee & Shirley
 Donovan, Adam
 Eastman, Paul & Sue
 Eilers, John
 Emmons, Eric
 Engel, Paul & Barbara Allen
 Ewing, Craig & Marie
 Fawkes, Gordon & Christi
 Feeney, Peter
 Forbes, Bryan & Priscila
 Fors, Martin & Nancy Kraus
 Freedkin, Mark & Shellie
 Fry, Jack & Marjorie
 Gedney, Tim
 Gile, Stan
 Gillgoly, Mark
 Girard, Paul & Diana
 Golden, Bill & Shirley
 Goldsmith, Paul
 Hale, David
 Harmon, Brian & Monika
 House, Bob & Maryanne
 Hughes, Craig & Barbara
 Hunter, Bruce & Janice
 Isaacson, Lars & Tove
 Johnson, Cliff
 Johnson, John & Lisa
 Kent, Jerry
 Khan, Nas
 Lally, Bob & Mikki

Laurence, Bert & Barbara
 Laursen, Don & Chriss
 Leavitt, Chuck & Lynn
 Levine, Lois
 Manker, Al & Carol
 Mathews, Gary & Maggie
 Melville, David
 Mertens, John & Kim
 Michel, Nancy
 Miller, Ben & Cathy
 Miller, Carl & Sue
 Moore, Terry & Edith
 © Morgan, Bob & Hope
 Morley, Dave
 Moses, Dave & Georgia
 Murphy, Mike & Ellen
 Nelson, James
 Newman, Joanne
 O'Shaughnessy, Terry &
 Willie Sue
 © Palmquist, Joe & Jackie
 Pence, Steve & Kristin
 Pilla, Jon
 Place, Dan & Gay
 Pope, Doyle & Kim
 Priceman, Bernard & Ruth
 Queen, David
 © Rapp, Jim & Pat
 Regas, Louis & Nancy
 Reynolds, Blair & Loni
 Richardson, Kent & Marge
 Rohwer, Claude
 Rollins, Steve & Peggy
 Rosica, Bill & Mary
 Salz, Don & Rosye
 Salz, Joe
 Sandorff, Paul
 Schleier, Tom & Janet
 Schlesinger, Morrie & Sharon
 Smeds, Connie
 Smith, Kevin & Karen
 Sousae, James & Joan
 Spinks, Philip
 Stephenson, Carol
 Sylvia, Ken & Theresa
 Tappan, Jonathan
 Taylor, Kerm
 Thiesmeyer, Kirt & Dee
 Thompson, Bob & Rachel
 Trumbull, Stanley & Donna
 Turner, Tyler
 Van Bogelen, Doug & Carol
 Warkentin, David & Jennifer
 Warschauer, Dan & Irene
 Webb, Allan & Kristine
 Weiser, Les & Kathy
 Womac, Larry & Susan Boring
 Young, Joe & Katherine

ILLINOIS (E)-22 MEMBERS

Advisor level of Membership
 Kraatz, Celia

Counselor level of Membership

Fagan, Jack & Sharon
 Graham, Dorothy
 Roll, JR

Wells, Glenn & Garilyn

Partner level of Membership

Betczynski, Mark & Carol
 Bostick, Jim & Mary Ann
 Bowyer, Jeff & Marsha
 Brandt, Hank & Donna
 Brooks, Ralph & Mary
 Cearnal, Bob & Jo Reed
 Ferro, Trenton & Judy
 Fourmont, Jim
 Kastens, Jules
 Kent, John & Kate
 Kingdon, Dick & Lee
 Lathom, Jeff & Debi
 Mottesheard, Adam
 Murahata, Rick & Renee
 Schwarzkopf, Raymond & Lisa
 Siebert, Rob
 Smyth, Daniel & Marianne

JOHNNY APPLESEED (G)-69 MEMBERS

Director level of Membership

© Gray, Don & Cindy
 Weygandt

Advisor level of Membership

© Jenkins, Joe & Barbara
 Bruning

Counselor level of Membership

Barford, Brian & Jean
 Stombaugh, Ted & Joanne
 Windnagle, Bill & Maxine
 Witham, Walter & Ann

Partner level of Membership

© Bushong, Lane & Nancy
 Carper, Doc & Lois
 Connelly, Mike & Christy
 Courts, Bari & Carolyn
 Duplaga, Tom
 Everett, Chan & Marsha
 Ferenc, Deborah
 © Flinn, Darryl & Meredith
 Fuller, Ford & Kathy
 Fuller, John & Charlotte
 Gilman, Paul & Deb
 Goss, Randy
 Grecni, Kathy
 Gross, Bertram & Kathleen
 Harnish, Bill
 Hawkins, Tom & Mary Grace
 Musuneggi
 Hawks, John & Sophie
 Hipp, David & Tamara
 Hixon, Paul
 Houser, Bob & Nancy
 Icenogle, Larry & Mary
 Kalb, Tim & Angela
 Kelly, Gerald
 Kleja, Stan & Lisa
 Krackhardt, David
 Lapp, Alan & Susan
 Lazar, Doug & Virginia
 May, Ted
 Moorehead, Bob & Edie
 Mucha, Moch & Wilma
 O'Dell, Brian
 Parsons, Casey & Dominique
 Pendleton, Tom & Karen
 © Ramsey, Jim & Bette
 Reichenbach, Terry
 Rettig, Nathan

Riddick, Frank & Pat
 Rose, Ted & Steve Waggoner
 Ross, Puck & Jackie
 Rubin, Dave
 Rumas, Chris
 Schweizer, Grace
 Scott, Brad & Susie
 Sitter, Mike
 Siwik, Denny
 Slife, Dave & Mary Lynne
 Smeltz, Douglas & Shelley
 Snyder, CC & Chrissy
 Stauffer, Troy & Jane
 Stevens, Ken & Sharon
 Stratton, Paul & Sandra
 Ulrich, Jeff & Mary
 Vormelker, Richard
 Walkover, Fred
 Wyszomierski, Steve & Beth
 Yoder, Lamar & Dianne
 Young, Gary
 Young, Jon
 Zattau, Brian & Cindy
Ensemble of Excellence level of Membership
 The Ritz
 Ayling, Ben and Mary Ann
 Hiner, DJ and Barbara
 Nichol, Nic and Suzie
 Shisler, James

LAND O' LAKES (H)-59 MEMBERS

Director level of Membership
 © Lidstad, Dick & Peg
 FLBTMOT

Advisor level of Membership

Brown, Wilson
 Hall, Jim & Pat
 Heike, Dan & Lisa
 © Lee, Jim & Linda
Counselor level of Membership
 Althof, Jay & Beth
 Bester, Ken
 Donehower, John & Janet
 Jarnberg, Peter
 Johnson, Steve & Linda
 Libsack, Syd & Abby
 Lindberg, Kirk & Diane

Partner level of Membership

Agnew, Bob
 Albrecht, Bill & Kathleen
 Bartkowiak, Bob & Laura
 Benrud, Brent & Pamela
 Bloomquist, Mark
 Born, Russ & Jeni
 Bowen, David
 Brey, Bob & Therese
 Carnes, Doug
 Dean, Lawrence
 Doss, Donald & Barbara
 Dove, Erik & Tona
 Ensrud, Ray
 Fricke, Bob & Charlotte
 Gusmer, John
 Guthrie, Charles
 Hubbell, Jym & Janet
 Hurd, Rick & Vickie
 Jaeger, Lou & Ruth

Kilbourne, Bill
Knaus, Russell & Lani
Kunze, Tim
Langren, Bryan
Lessard, Archie & Kathryn
Lichtsinn, Craig
Lieble, Randy & Jane
Lietke, Mike & Carol
Lynch, Brian & Laura Bothe
Lynch, Kevin
McAlexander, Patrick
Miller, Doug & Connie
Monson, Marty & Amy
© Orff, Judd & Angie
Peck, Lowell & Ann
Saeger, Mike & Wanda
Slinde, Ken & Mary
Staedt, Dick & Dawn
Street, Fred
Taxdahl, Jeff & Wenda
Ulriksen, Joshua
Ward, Bill & Kim
Weiss, Harvey
Wentworth, Ken & Karen
Zarling, Rudy
Zenk, Arvid & Jane
Zorn, Steve & Eva

MID-ATLANTIC (J)-126 MEMBERS

Director level of Membership

© Harner, Chuck
Noble, Tom & June
Advisor level of Membership
Fess, Ken & Kim
Hirsh, Bob & Dena
© Kempton, Dean & Marilynn
Knickerbocker, Ron & Lucy
Kocher, Ellis & Miriam
McFarland, Sam

Counselor level of Membership

Ashby, Rick
Bankard, Dave
Berger, Joe
Byrd, Jim & Barbara
Delehanty, Steve & Connie
© Hawthorne, Jim & Pearl
Herr, Eric & Fran
Plaag, Gary
Quartarone, Rick & Kim
Reynolds, Terry
Santora, John & Kathi
Van Emburg, Bill
Whitman, Pete & Mary
Wile, Alan & Patricia

Partner level of Membership

Agnew, Mal
Anderson, Kirk & Sandy
Andrus, Nick & Katherine
Ayers, Jon
Bansbach, Jay
Barnes, Walt & Judith
Beattie, Chris
Bentley, Mark & Janet
Bickford, Harry
Bird, Dale
Blount, Al & Melissa
Bomback, Larry
Botts, Chuck & Gwendolyn

Brown, Doug & Jill
Buechler, Chris & Dixie
Kennett
Cameron, Jack & Ermina
Cerutti, Joe
Cobb, Timothy
Cohen, Paul & Carol
© Colosimo, Bill & Linda
Cullen, James
Derstine, Larry
Devine, Sean
Duffy, Ned
Eamigh, Bob & Barbara
Eckman, Bob & Maggie
Eliason, Randall & Cherie
Kiser
Endy, Daniel & Elyse
© Fetterolf, Howard & Sharon
Fromm, Chuck & Karen
Schifter
Garrett, Joaner
Gilmore, Michael & Gigi
Hasib, Rafi
Havens, Andrew
Herman, Al & Irene Szopo
Heyer, Bill
Higgins, Grizz
Hobbs, Jim & Nancy
Hordijk, Willem
Hunter, Chuck & Ramadan
Caysever

Hunter, Joe & Diane
Jakovac, Ig & Anne
Johnson, Ross & Susan
Williams
Jones, Keith
Klabatz, Chester
Klein, Larry & Mel
Kraft, Hal & Dorothy
Kriebel, Wes & Rose
Lehman, Charles & Katherine
Lynk, Braden
Markel, John
Martin-Kirkland, Kahmai
Maurer, Rich & Jackie
Miller, Bud
Niemann, Frank & Grace
Nisbet, Tom
Olivo, Carmen
Olson, Oley & Patricia
Patricia, Jamie & Jen
Patrick, Pat & Peggy
Peterson, Steve
Phillips, Glenn
Pitzer, Jack & Pat
Poulin, Ian
Powell, Dick & Roxanne
Pratt, Doug
Quinn, Brian
Reynolds, Jim & Lee
Ritz, Steven & Sharon
Rosenbaum, Les & Irene
Ross, Charles
Rub, Ken
Rust, Dean
Santino, Paul
Savard, Mike & Mary
Sherman, Jim & Linda
Shoemaker, Cliff & Gretchen
Sklans, Rob & Diana

Smull, Dick & Anny
Spero, Don & Nancy Chasen
Stapleton, Pat
Tarp, Roger & Jean Roberts
Taylor, Rick & Susan
Telford, Tom & Mary
Thatcher, Chuck
Thomas, Dale & Bernie
Thompson, Donald
Tyson, Tom & Maria
Van Der Kolk, Don & Suzanne
Wagner, Rick & Peggy
Wallen, Mike & Linda Harold
Watts, Dave
Weinstein, Stuart
Williams, Susan
Wilson, Bob & Beth
Winik, Jeff & Judie
Winslow, Valerie
Worrow, Jack
Wyant, Tim
Yates, John
Ensemble of Excellence
level of Membership
Mayhem
Dingle, Stephanie & Neil
Fellows, Matthew
Pinto, Mike
White, Ken

NORTHEASTERN (K)-39 MEMBERS

Director level of Membership

Lamson, Alan & Janet
Advisor level of Membership
Carter, Phil & Janet
Counselor level of Membership

© Amone, Paul & Carmen
Haas, Guy
Lumbard, Mark
Tramack, Steve & Renee
Partner level of Membership
Dodge, Jim
Dusenberry, Peter & Christine
Kim

Emmerich, Marc & Anne
Flock, Ron & Kathleen
Golenbock, Rob
Grace, Bill & Jan
Hamilton, Susan
Henderson, Chris & Lisa
Hewey, Don
Johansen, Ernie & Connie
Kettell, Charlie & Bettie
Klinger, Roger & Ellen
Kopser, Matthew
Labrecque, Richard
Logozzo, Francesco
Manion, Bill
McElhoe, Glenn & Lili Silver
McGrath, Kevin & Anne
Naples, Don
Nester, Steve & Helene
Kassler
Newton, Dick & Nancy
Nolan, Jim & Jean
O'Leary, Brian & Mary
Pacht, Mike & Barbara
Padki, Manoj & Manisha

Patterson, David
Pierce, Don
Plumb, Steve & Barbara
Reid, Glenn
Sauer, Shirley
Simpson, Jim & Karen
Ware, Nate
Zimmering, Stan

PIONEER (I)-29 MEMBERS

Director level of Membership

© Lewis, Roger & Sue
Advisor level of Membership
Hubbard, Joseph & Lois
Counselor level of Membership

© Eubank, Ron & Marcia
Montera, David & Sally
Weaver, Douglas & Lynn
Partner level of Membership

© Anderson, Dave & Pat
Balint, John & Judith
Conner, T C & Tina
Cordle, Mike & Cathy
Ditto, Jerry & Cathy
Dumbauld, Ted & Marilyn
Fisk, Al & Bonnie
Gillingham, David & Linda
Hansen, Mike
Hawley, Mark & Donna
Herge, David
Johnson, Jim & Julie
© Kunz, Jim & Kristina
Meyer, Gary & Bonnie
O'Donnell, Mike & Jan
Root, Mike
Ryan, Robert
Sielski, Philip
Smeltzer, Tom
© Smith, Robb
Spizarny, David
Struyk, Curt & Nancy
Warnaar, Steve & Debbie
Winters, Bob & Kay

ROCKY MOUNTAIN (S)-70 MEMBERS

Director level of Membership

Deputy, Mike & Sheila
Advisor level of Membership
Cline, Doyle & Becky
Forsberg, Gary
Kimball, Curt & Judy
Ledbetter, Dennis & Joan
Counselor level of Membership

Benson, Kirk & Lynn
Clark, Dan & Mary Lynn
Coffin, John & Maureen
Docker, Vern & Lindalin
Miner, Gene
Ramsay, Greg & Sherri
Sgrignoli, Rod & Paige
Zimmermann, Steve
Partner level of Membership
Anderson, Wayne & Sandy
Biffle, Bill & Lillian
Blauwkamp, Rol & Samantha
Bugg, Tom

Busse, Michael
Byers, Kelly
Campbell, Jim & Karen
Cauley, Bob
Clark, Dan & Jamalee
Curtis, James
Davidson, George & Sally
Fox, Bob & Susan
Franklin, George & Sally
Gallagher, Jim & Judy
Gardner, Sharon
Greenwood, Frank & Gail
Hickenlooper, Gary & Debbie
Howe, Larry & Jane
Jennings, Mark
Kelts, Al
Lucey, Jim & Ruthanne
MacAlpine, Tim & Diane
Manion, John
Marsh, Brian
Mondragon, Shawn & Darlene
Monson, Brad & Monique
Nelson, Evan
Palmer, Mark & Renae
Pape, Kevin & Toni
Paul, Ralph & Loretta
Polaski, Kenny
Porrey, Doug & Mary
Pranaitis, Tony & Nancy
Reed, Bob
Reimnitz, Adam & Heather
Ridenour, Neil & Elda
Rothhaupt, Lawrence
Simmons, Tim & Bobbie
Snyder, Charlie
Sparks, Tony
Tackett, Mary
Taylor, Lee & Judy
Taylor, Mike
Thorell, Dave & Lynette
Triggs, Gregg & Vivienne
Vaughn, Chris
Vertrees, Joe & Janet
Waldheim, Peter & Alicia
West, Paul & Ruth
Wisdom, Bryan
Witmer, Dave
Woods, Woody & Darlene
Woodward, Catherine

SENECA LAND (M)-9 MEMBERS

Chairman level of Membership

Capenos, Warren
Advisor level of Membership
McCollum, Chuck & Betty
Partner level of Membership
Buell, Doug & Kristen
© Hopkins, Rob & Kris
McCollum, Deborah
Sagrestano, Brian & Christine
Thompson, Jerry
Vitale, Joe
Votava, Ward & Debra

SOUTHWESTERN (N)-62 MEMBERS

Counselor level of Membership

Bell, Dan
Brennecke, Scot
Cooper, Dwayne & Barbara
Parker, Gary & Ruth Ann
Rensi, Randy
Seay, Beverly
Partner level of Membership
Acevedo-Gierbolini, Jorge
Anderson, Brent & Laura
Applegate, Gary & Chrissy
Beck, John & Kathleen
Belcher, Robin
Bergmann, Tom & Angela
Buchaas, Eric & Shelley
Caetano, Greg
Calderon, Bob & Rose Mary
Calvert, Bill & Marion
Christensen, Marty & Linda
Collins, Maurice & Mary
Coon, Steve & Donna Godbout
Coyner, Roger
Curtis, Bob
Denayer, John & Karen
Denton, Chuck
Devine, John & Sherry
Digges, Roy & Deborah
Driscoll, Denny & Ann
Elam, Greg & Becky
Fullerton, Baxter & Michele
© Graham, Jim & Linda
Grundish, David & Linda
Hagan, Randy & Vennessa
Hairston, Brent
© Hammer, Hank
Hammons, Michel
Hennerberg, Gary & LoCinda
Hodges, Bob
Laverpool, Frank
Mahone, Mike & Anne
Maples, Landon
Martin, Randy & Carolyn
Mayo, Clay & Judeth
McCullough, Robert
Mercing, Terry & Jenny
Minnich, Dave & Martha
Cooley

Morrison, Rich & Anne
Ott, Mike & Carole
Pivarnik, Hank & Mary-Jo
Quiat, Allan & Jean
Reavis, Paul & Marguerite
Rentz, John
Ribble, Linda
Richardson, Richard & Cindy
Schneider, John & Lucy
Shaner, Russ & Michelle
Sitterly, Lewis & Cary
Stevens, Jack & Leslie
Tett, Hub & Pam
Thompson, Mike
Towry, John & Gretchen
Tweedy, Sam
Welsh, Fred
Worthington, John & Jackie

SUNSHINE (P)-99 MEMBERS

Director level of Membership
Klym, Richard
© Loos, Randy & Jolene

Advisor level of Membership

© Brutsman, Bob & Ellen
© Hanrahan, Tim
Mills, David & Linda
Riches, Dave & Barbara
Themmen, Arne & Tammy
**Counselor level of
Membership**
Bennett, Gerry
Carnahan, Ron & Pat
Checca, Bruce
De Rosa, Tony
© Elswick, Becky & Shannon
© Haley, Pat & Jan
© Shaw, Dick & Nancy
Smith, Ed & Maggie
Wicker, Karen

Partner level of Membership

Ackley, Jerry
Alden, Phil & Nancy
Anderson, Dick & Patricia
Anderson, Don & Ginny
Aucoin, Ed & Janet
Baird, Dick & Martha
Barbarisi, Charles & Cindy
Bechtel, Dick & Shelby Jean
Cowles
Borts, Andrew & Dale
© Bowser, Bob & Judy
Breedon, Gabby
© Brinkmann, Dan & Barbara
Brown, Jim & V-Ann
Brown, Mac
Brown, Roy & Helen
Brownell, Ann
Bubbers, Bill
Buckner, Ken & Hollie
Burg, Jim & Dottie
Byron, Robert & Sue
Campbell, Robert
Clapp, Larry & Roxanne
Cleveland, Brett & Debbie
Crisostomo, Matt & Shannon
Czwalgla
Cullen, Bill & Ginger
De Rosa, Lois
Dignan, John & Carol
Eccher, Stephen & Cynthia
Edwards, David & Teresa
Farrell, Fred & Kim
Fortune, Tony & Alexis
Gape, Ray
Gettigg, Jay & Carol
Glasgow, Bill & Carolyn
Hanser, David
Harner, Randy & Lauren
Hixson, Bob & Gena
James, Darrell & Karen
Janes, Steve
Johnston, Bob
Kannberg, Dave & Louisa
Lambert, Don & Lynn
Lawrence, Lee & Patti
Lenny, Charles
Leonard, Larry & Joan
Mansfield, Stan & Marion
McCarthy, Joe & Kaye
McClean, Kent
McCreary, Clare & June
McKenzie, Ed

Messler, Don & Betty
Morrisey, Janis
Muir, Dick
Nelson, Eric
Patterson, Greg
Poehler, Gray
Pontoni, Ray & Debora
Port, Marty & Barbara
Proctor, Daniel
Rafe, Stephen
Richards, Dave & Barbara
Roberts, Dave & Dianne
Robinson, Larry & Barbara
Schuman, Sanford
Schwob, Nick & Bobbie
Slade, Bob
Smeds, Roger & Patricia
Smith, Morgan
Sobolewski, Mike & Jan
Spang, John & Ann
Spence, Bob & Maria
Stoup, Jim & Janet Albright
Stump, Bob & Fran
Tarr, Ron & JoAnn
Teutenberg, Jay
Ward, Bill
Warner, Sterling & Rebecca
Wells, Peter & Barbara
Williamson, George
Woods, Jim & Karen
Wurmnest, Lou & Carol
Yurich, Gordon & Dana
Zarfus, Dick & Jetty

FRANK THORNE (T)-4 MEMBERS

Partner level of Membership

Klimowicz, Ed
© Leitnaker, Frank & Christel
© Santarelli, Frank & Dorene
Warner, John & Marci

SING CANADA-46 MEMBERS

Advisor level of Membership

MacDougall, JR Digger & Nancy

Counselor level of Membership

Borden, Gerry & Linda
Ernst, Trinda
Foster, Jonathan & Joanne
Hartley, Doreen
Maddonald, Rob & Katharine
Bondy
McTaggart, Doran
Pearce, Dave & Jane
Phillips, Murray & Mary
Stephenson, Ken
Thexton, James & Barbara
Townner, Barry & Sharon
Verwey, Al & Beverley
Wilkie, John & June
Partner level of Membership
Arnold, Rob & Wendy
Bezaire, Dan
Black, Michael
Bohlken, Keith and Rhonda
Bredesen, Larry & Sherrie
Christie, Shirely

Deacon, John
 Driedger, Herold
 Drouillard, Michael
 Fleeming, Ian
 Greer, Paul
 Koehler, Ken and Barb
 Laflamme, Denis & Aileen
 Carney
 McGillivray, Ron & Linda
 Mirhady, Alex & Mindee
 Morton, Brent & Trish
 Pageau, Ted
 Robertson, Bill & Darlene
 Jones
 Roy, Jim & Dawn
 Rozycki, Dave & Regina
 Russell, Naomi
 Scappatura, Chris & Elisabeth
 Smith, Adrian
 Smith, Ian & Wendy
 Smith, Ron & Gail
 Southam, Gord
 Sperry, Lee & Julia
 Spratt, David & Bunny
 Thexton, Lorraine
 Vermue, Bill & B.J.
 Westin, Jan-Ake & Barbro
 Wheaton, Steve

Ambassador of Song (by district)

CARDINAL (F)-118 MEMBERS

Mentor level of Membership

Busch, Gregory & Karen
 Shank, Lowell & Darlene
 Washburn, Alan & Jenny
Coach level of Membership
 Cline, Steve & Becky
 Gregory, Chris & Beth
 Johnson, Craig
 Munn, Bill
 Richards, Steve
 Roembke, Greg & Jane
 Schrock, Dale & Patty
 Strauss, John & Nancy
 Sturgell, Paul
 Uveges, Joe & Martha
 Zarembo, Richard

Sponsor level of Membership

Adkins, Willard
 Anthony, Larry & Marti
 Arthur, Steven
 Atherton, Hank
 Baker, Ron & Sharon
 Benner, Robert
 Bettler, Alan
 Blume, Bob & Anita
 Bradley, Thompson
 Brodersen, Steve & Dawn
 Brown, Gary & Lyne
 Burke, Steve & Rhonda
 Busboom, Jordan
 Christine, Bill
 Cole, James & Barbara Jones
 Conroy, Pat
 DeMuth, Jeff & Kathleen
 DeWitt, Paul & Cathline
 DiBacco, T.J. DiBacco

Disbrow, Charlie
 Duke, Jim
 Fisher, Denny & Laura
 Fisher, Phil & Joan
 Foley, Kerry & Cindy
 Fouts, Dave
 Fox, Joe & Peg
 French, Michael & Barbara
 Ramlow
 French, Mike & Paulette
 Frush, Jerry
 Gabriel, Paul
 Gano, Peter & Patricia
 Garitson, Gary & Linda
 Garmire, Pat & Lori
 Geesa, Ben & Penny
 Glick, Bill
 Green, Don
 Griffith, Sonny & Mary Anne
 Martin
 Hampton, Rich
 Hansen, Larry
 Hanthorn, Keith & Becky
 Hardman, Ed & Vickie
 Hart, Tom
 Heathman, Lewis
 Hinkle, Jimmy & Teresa
 Hinson, Liston & Betsy
 Hoffman, John & Sarah
 Houchin, Tom
 Houk, George
 Huber, Ken
 Hunstiger, Eric
 Hutcherson, Coy & Amber
 Johnson, Dan & Barbara
 Jones, Mike
 Kendall, Bob
 Kendall, Vic
 King, Steve & Pat
 Larr, Joey
 Lovejoy, Vic
 Lyman, Julian
 Lyon, Jim & Becky
 Mangas, Rick & Imelda
 McBlain, Brian & Kathryn
 McCullough, Steve & Cindy
 McQuiston, John
 Miller Photography
 Miller, Andrew
 Montag, Joe
 Moss, Doc & Sandy
 Nagel, Phil
 Nash, Dwight
 Neely, Donald
 Neie, Van
 Nicholas, Jon
 Ogden, David & Karen
 Olson, Bryan & Kris
 Owen, Christopher & Erin
 Pearman, Ken
 Pettigrew, Lyle
 Powell, Bill
 Powers, Douglas & Sue
 Ramser, Andrew
 Ramser, Steve & Kathy
 Reagan, Chad
 Rose, Charles
 Roth, James & Peggy
 Sauder, Jim
 Sauer, Ken

Schick, Lloyd
 Schmidt, Joe & Megan
 Schneider, Tom & Leanne
 Schroeder, Dave & Janet
 Schulze, Dale & Melanie
 Schumm, Al
 Searls, Terry & Bonnie
 Sheely, Eric
 Smith, Larry
 Stevens, Patrick
 Sutton, Dick
 Thomas, Dave
 Timmerman, Dick
 Wasser, Larry
 Weiss, John & Elaine
 Wence, Terry & Mary
 Wright, Dwayne

CAROLINAS (Q)-116 MEMBERS

Mentor level of Membership

Curulla, Steve
 Fieffer, Warren
 Gregg, Geoff
 Long, John
 Price, Dick & Sue

Coach level of Membership

Allison, Bill & Carol
 Bennight, William
 Boyd, Dave
 Conway, William
 Curl, Dick
 Fitch, Michael
 Franklin, Dick
 Freeman, Randy
 Giersch, Brian
 Gilderoy, Marvin
 Hanrahan, Bob
 Lucas, Bob & Janet Russell
 McGrath, Tim & Carol
 McMurtry, George & Ann
 Meisner, Jerry
 Pfister, Eugene
 Price, Wayne & Emilie
 Ramsey, Joyce
 Rhoades, Marty
 Rich, Charles
 Rumph, Harvey
 Simpson, Joe
 Vickers, Jon
 Zinke, Greg & Kim

Sponsor level of Membership

Alexander, Rob
 Angiello, Ronald & Marcia
 Arnold, John
 Beaver, Roger
 Berube, Jim & Joan
 Bishop, Roy & Joann
 Bobo, Jay & Phyllis
 Brewer, Rusty
 Broadway, Jo
 Campbell, Don
 Cauble, David & Alice
 Chandler, Mark
 Clegg, Bill
 Cluett, Waldron & Elizabeth
 Cook, David & Elizabeth
 Doheny, Michael
 Eaton, Dennis & Anne
 Eddings, Jim & Charlotte

Elliott, Lon
 Ellzey, Mike
 Erwin, Russell
 Flowers, Gregory & Toni
 Ford, Jim
 Foster, Jeff & KerryAnn
 Fulton, Bill & Martha
 Fuson, Warren
 Gatland, Ray
 Geiger, Richard & Ann Marie
 Gratten, George & Irene
 Greene, Beverly
 Greenlaw, Thom & Kimberly
 Grove, David
 Harbin, Charlie
 Harris, Richard
 Harter, Laurence
 Johnston, Russ
 Kimbleton, Dennis
 King, Jim
 Krapf, Bob
 Kucheravy, Fran & Virginia
 Langley, Alan & Maggie
 Lee, Bob & Mary Ann
 Lesperance, Andy & Barbara
 Logan, Jeff & Charlane
 Loughlin, Joe & Marty
 Luck, Dave & Mel
 Lybrand, David & Heather
 Magee, Paul & Jane
 Mancuso, Mikey & Ann
 McCallus, Jack & Dee
 McCann, Hal
 McCauley, John & Barbara
 McDaniel, Craig
 McKenna, George
 Millard, Richard & Ann
 Norins, Michael & Kathy
 Norris, Jon & Valerie
 Northup, Fred & Julie
 Ogden, Glenn
 Overby, Wesley & Esther
 Pace, Steve
 Palagyi, Zig & Anne
 Parker, Dick
 Parker, Earl
 Pescarino, Phil
 Pherson, Vern
 Pixley, Annie
 Reinhart, Larry & Becky
 Ruegsegger, Rusty
 Russ, Juan
 Ryan, Joe
 Smith, Don
 Stewart, Isaac & Robbin
 Stivland, Greg
 Stock, Carl
 Sumerel, Tom & Jan
 Susong, Doug
 Sutherland, Taylor
 Tartock, Don
 Thompson, Mark
 Tilton, Squeak & Carol
 Triplett, Larry
 Tweed, Bob & Lorraine
 Villier, Chuck
 West, Tom
 Wilson, Jim & Janet
 Zweighaft, John & Carol

CENTRAL STATES

(A)–201 MEMBERS

Mentor level of Membership

Coleman, Gordon
Harre, Raymond
Morren, Jaylen
Pirner, Jake
Purvis, Leonard & Sharon
Vandervelde, Matt
Westman, Tom
Wolff, Jeff & Corrie

Coach level of Membership

Anderson, Bridget
Combs, Carter & Jeffi
Elefson, Tom & Peggy
Fletcher, Steve
Hammer, Dwight
Johnson, Gregory
Merle, Morris
Munch, Ken & Star
Pape, Rick & Pam
Rivard, Rod & Gladys
Shelton, Dane
Thomason, John & Stephanie
Wheeler, Troy

Sponsor level of Membership

Anderson, Bruce
Anderson, Pete
Andrews, Jon & Sira
Bagby, Jim & Joan
Battle, Robert
Beatty, Cameron & Jean
Beckman, Dean & Nancy
Bellof, Brian & Kimberly
Biddle, Donald
Bieber, Dale
Bittner, Matthew
Blake, Bill & Betty
Blank, Don & Jan
Bourg, Edward
Brandt, Alex
Brown, Bill & Patti
Bunyan, Bill & Marilyn
Burbank, Wendell & Vona Ann
Butler, Mark
Callahan, Michael
Casamatta, Dan & Susan
Chamberlin, Will
Chambers, Norm & Diane
Champion, John & Sarah
Childs, Edwin
Christensen, Jeff
Cornwell, Steven
Cross, Daniel
Cross, Eldon & Cathy Beck
de Neui, Jon
Downey, Ed
Dresher, Merlin & Sandra
Erickson, Allen
Erickson, Greg
Erwine, John
Fair, Steve
Ferguson, Fergie
Forbes, Jerry
Foth, Lawrence
Francis, Richard
Frankenfeld, Karen
Fuerniss, Mark & Lonnie
Fuhmann, Paul
Gibbons, James
Glanz, Amos & Cindy
Gnuse, Gene
Green, Nathan
Green, Rich
Griffe, Derek
Grimes, Eric
Guild, Maynard
Halsig, Mary
Hamilton, Mike
Hartline, Dave & Ruth
Sadasiyan
Hartzler, Dick
Havekost, Loren
Hunget, John
Hedtke, Phil & Michelle
Hewett, Danny & Patricia
Duggan
Hoffmeier, Bruce
Holsten, Kendall
Hunget, Connie
Hunget, Grant
Hunget, Phil
Huot, Cliff & Sherrie
Huyck, Rich
Johns, Dennis & Ella
Kaas, Mike
Kawa, Larry & Shari
Keever, Mark & Lynda
Kerdus, Bob & Lynn
Kiesey, Brad
Kimball, Dick & Pat
King, Bob & Sharon
Kleinschmidt, John
Klinkefus, Gerry
Knapp, Dave
Kohel, Edward
Kready, Jon
Kreher, Al
Kurtz, Kyle
Lane, Don & Linda
Lawson, Duane
Lewis, Lisa
Link, Tim & Jane
Long, Greg & Cheryl
Loomis, Carey
Mance, Robert
Marshall, John & Ronda
Mathieu, Mike & Jan
Mays, Ron
Maytum, Mike & Tami
McClelland, Bob & Colleen
McCune, Darrell & Linda
McFarland, Kenneth
McGill, Mike & Maggie
McIntire, Ronald
Meier, Gerald
Meyer, Don
Miers, Larry
Miller, Kent
Mitchell, Torrey
Montgomery, David & Shirley
Morden, Ron
Morren, Ric
Mott, Gary & Joyce
Muehler, Darron & Vicki
Neilsen, Victor & Nancy
Nelson, Mike
Nelson, Paul
Newman, Cliff
Ott, Donald

Owen, Keith
Owston, Dick
Perry, Vince & Melladee
Petty, Dennis & Barbara
Powell, Lee & Julie
Prashak, Brian
Price, Steve & Beverly
Rasmussen, Dan
Rembecki, Andrew
Renn, Daniel & Donna
Reynolds, John & Deloris
Richardson, Matt
Sabata, Rob & Mary
Sales, Adam & Jenn
Sanders, Barry
Scheiddegger, Mike & Linda
Schneider, James
Schulein, Tom & Vivian
Schumacher, Mike & Linda
Schweer, Keith
Schwery, Lyle & Jolene
Scott, Alex
Scott, Michael
Scott, Ted
Severt, Al
Sewell, Scott
Shaffer, Wendell
Shapiro, Harvey
Short, Mike
Silsby, Joe
Sjostrom, James & Connie
Smith, Ray & Lynda
Smith, Sean
Spangler, Willy
Stein, Dick & Marcia
Sternborg, Dave & Lori
Stock, Dave
Swarts, Harry
Swenson, Bob & Telva
Tanis, Jim & Ruth
Temeyer, Floyd & Carol
Wieneke
Templer, Mike & Lisa
Thomson, Don & Joan
Tingwald, David
Tipton, Tom
Traylor, Rex
Tritsch, Kevin
Tubbs, Lee
Turlin, Carl
VanDyke, Philip & Vicki
Velazquez, Bob
Veteto, Jeff
Webb, George
Weddel, Gary
Weidler, Marlin & Beverly
Wentworth, Wayne
West, Jeremy
Whiting, Chad
Whitney, Chet
Wilson, Fran & Jan
Wright, Harold
Yarbrough, Brandon & Erin
Yinger, Vince & Susan
Young, Don
Young, Jerry
Young, Ray & Diana
Zart, Aaron
Zimmerman, Kent

DIXIE (B)–158 MEMBERS

Mentor level of Membership

Brannon, Dennis & Patricia
Davis, Bob & Evelyn
Lozeau, Bob & Eileen
Shurbutt, Bob & Donna

Coach level of Membership

Angles, Gordon
Bell, Russell & Claudia
Biccum, Bob & Audrey
Bickman, Bernie
Bowman, Tony & Kathleen
Brown, George
Charlton, John
Curry, Mike
Doetsch, Andrew & Jan
Farrar, Bill
Freshour, Hal & Gail
Guy, David
Hopeman, Doug & Amy-Ann
Hutcheson, Neil & Verda
Joy, Ed
Lewis, Maurice & Amy
Loi, Elio
Pennington, James & Annie
Plotts, John
Puckett, A.J.
Riggle, Tom & June
Strong, Jacob
Sukoff, Richard
Warner, Ann & Jim
Weldon, Jim

Sponsor level of Membership

Adams, Bruce & Rita
Bagwell, Colin
Bennett, John
Berry, Chuck & Linda
Billips, Bill
Blazek, Melissa
Blazek, Paul & Lindy
Brannen, Wil & Melody
Brown, Craig
Brown, Ignatius
Burdick, Chet & Marilyn
Bush, Larry
Cain, Jim & Linda
Caldwell, Clarke & Esther
Carey, Bob & Joyce
Cohen, Scott
Colon, Bert
Conradi, Roy
Cook, John & Linda
Cowan, Ron
Crenshaw, David & Vivian
Cumbie, Mike & Alicia
D'Ambrosio, Steve
Davenport, Charles & Liz Cillo
Davis, Eddie & Susan
Davis, Max & Sally
Davis, Rick
DeWeese, Michael
Dorn, Tom & Judy
Durdan, Paul
Edmondson, Wally & Shannon
Elvers, Dave
Ely, Jimmy
Ferguson, Neil & Debi
Fobart, Dave
Ford, Steve & Terri
Forrester, Bill & Eileen

Franks, Lee & Andrea
 French, Rick
 Gilsdorf, Leo
 Gray, Caki & Justin
 Green, Chuck
 Grindley, Drew
 Grubb, Steve
 Grussing, Dan
 Harris, Connie
 Helton, Jess & Heather
 Hilliker, Bill
 Hine, Melody
 Hitch, Robert
 Holder, Charlie
 Holmes, Frank
 Holt, Sonny & Janet
 Horne, J.D.
 Jones, Larry
 Jordan, Jori
 Justus, Drayton & Sue Ann
 Kaltenbach, Bob
 Kilpatrick, Tom
 Kirk, JW
 Kohrs, Richard
 Loadwick, Jim
 Logan, Ron
 Lowry, Mike & Doris
 Macek, Tom & Karen
 McShan, JJ
 Merry, Ted
 Miller, Deborah
 Modrall, Ryan
 Morales, Luis
 Morgan, Mark
 Naddor, David
 Newcombe, Christine
 Nichols, Tony & Laura
 Nixon, John
 Nybo, Warren
 Ogdon, David
 Ogiba, Sarah
 Otwell, Vern
 Overton, Jake & Cindy
 Oxford, Dylan & Michelle
 Parker, Doug
 Pendley, Steve
 Peppenhorst, Stan & Betty
 Peters, Bob & Anne
 Peters, Marilyn
 Pettis, Chuck
 Phillips, John
 Phillips, Kenneth & Sandy
 Pigue, Larry
 Powell, Matt
 Pugh, Boss & Sandy
 Robinson, Neal
 Romero, Eddy
 Rose, Don & Amy
 Savage, James
 Schrader, Wayne & Toni
 Schultz, Paul
 Shultz, Erich & Cynthia
 Snodgrass, Jim
 Southern, David & Julie
 Spurlock, Bruce & Peggy
 Stallcup, Leon
 Strickland, Wilbur & Mary
 Swearingen, Diane
 Thomas, Patrick
 Towns, Richard & Jackie

Tschetter, Chet
 Turner, John & Linda
 Vogtner, George & Linda
 Wade, Al & Sharon
 Walker, Tessa
 Wharton, Ed
 White, Jimmy
 Wilhoite, Jerry
 Williams, Robert & Barbara
 Wilsher, Arlin & Nancy
 Wilson, Chuck & Melissa
 Woods, Jeff & Melissa
 Wooldridge, Bobby & Cathy
 Wyman, Hutch & Sue
**Champions of Tomorrow
 level of Membership**
 129 & Counting
 Robert, Shelby
 Schreiner, Bill
 Snellings, Bob and Paula
 Taylor, Ray
California Kid
 Goldman, Stephen
 Hayes, Caleb
 Hughes, Dalton
 Snook, Kyle

EVERGREEN (C)-99 MEMBERS

Mentor level of Membership

Kari, Steve
 Macdonald, Rob
 Meyer, Dan & Eileen Kelly
 Powell, Chris
Coach level of Membership
 Burbidge, Jim
 Caner, John
 Gabel, Chris
 Gale, J. David
 Graham, Art
 Hsu, Raymond & Mary
 Jones, Shirley
 Lehman, Jack
 Petersen, Don & Judi
 Renhard, Paul
 Ryder, Charles
 Williams, Bubba

Sponsor level of Membership

Berg, Dennis & Susan
 Bergh, Phil
 Beshore, Bob
 Bissell, Bernard
 Borah, Bill
 Bose, Roger
 Bostrom, Ed & Aggie
 Caplan, Chuck
 Caretto, Gabriel
 Carnegie, Jim
 Casberg, Jake
 Cederwall, Ric
 Cermak, Aaron
 Cheasebro, Phil
 Click, Jeff
 Coates, Doug
 Courtright, Mike
 Crandall, Matt
 Cunningham, Kevin
 Davi, Scott
 Davies, Elizabeth
 Davis, Bur

Devitt, John
 Dignan, Todd & Twyla
 Eichner, Fred
 Foreman, Bruce & Paula
 Foss, David & Kimberley
 Gleason, Jack & Rhonda
 Gode, Richard
 Gonzales, Doug
 Hage, Joe & Beth
 Handley, Dick & Louise
 Hedeen, Keith
 Hickman, Bill
 Hobson, Conly
 Hoem, Donald & Kathryn
 Holdsworth, Jerry
 Hommel, Larry
 Isley, Dotty
 Jameson, Todd
 Kahle, Jim
 Keating, Daniel
 King, Bob
 Koppa, Scott
 Kopsner, Andy
 Krumbholz, Jay
 Landback, Chuck
 Law, David & Jeanne
 LeClerc, Josh
 Louden, Paul
 Lovick, Marty
 Ludeman, John
 Lyttle, John & Judy
 Mason, Bill
 McGuire, Chuck & Lorelei
 McGuire, Melanie
 Mickelwait, John
 Motteler, Del
 Osborn, Dave
 Outcalt, Ron & Kathy
 Overbay, Douglas & Karen
 Perkins, Larry
 Rants, Lauren
 Rau, Don
 Rebello, Rohan
 Rinehart, Michael & Sally Ann
 Robertson, Roy
 Roegiers, Chuck
 Schrupp, Dave
 Smith, Beth
 St. Germain, Gene
 Steeds, Roger & Betty
 Thomas, Robert
 Thompson, Scott
 Turner, Lynn
 Vigil, Samuel
 Vollmer, Rick
 Watson, Doug
 Welsh, Jeff & Mary
 Wilkinson, George & Sybil
 Wolfe, Dan
 Wolfe, Deena
 Wright, John

FAR WESTERN (D)-289 MEMBERS

Mentor level of Membership

Alexander, Michael & Ella
 Andersen, Rog & Linda
 Bates, Max
 Briner, Dave, in memory of
 Sally

Campbell, Jay & Mary
 Drew, Peter
 Hughes, Grace
 Rail, Dave
 Sturke, Derick & Sue
 Taylor, Steve
 Ward, Allan
Coach level of Membership
 Amin, Shreyas
 Apple, Bob & Bobbi
 Bauer, Michael
 Bjornsen, Eric
 Boeck, Bill & Sandy
 Czubiak, Bob & Joy
 Darnell, Roe & Donna
 Elbert, Mike
 Evans, Mike & Laura
 Farmer, Chet
 Frickey, Max & Judy
 Gassman, John
 Gray, Robert
 Inenaga, Andrew & Eiri
 Jones, Ty
 Karlin, Bob
 Koch, Ken
 Laskey, Thomas
 Maass, Jim & Nancy
 Maurer, Bob
 May, Ron & Kris Pwell
 McDougal, Earl & Bev
 Miller, Pete
 Mollett, Chuck
 Palquist, Joe & Jackie
 Peacock, Steve
 Plain, Colin
 Plum, David & Barbara
 Price, Greg
 Remmers, Rich
 Rogers, Neal & Joanna
 Roth, Bill
 Scholtz, Kenneth
 Sevesind, Donald
 Sherman, Jim & Jane
 Spencer, Rich
 Tabry, Mark & Briana
 Tautkus, Dave & Cathy
 Tieberg, Bill
 Vaughn, Dale & Kim
Sponsor level of Membership
 Adler, Bud
 Alger, Rich
 Amblad, Bob
 Anderson, Brent & Sue
 Aumock, Tom
 Barber, Howard
 Barry, Bob & Betty
 Baughman, Dee & Lynn
 Beacom, Bill & Joyce
 Bedford, Jamie
 Bell, Wayne
 Betterton, Todd & Dianne
 Beutel, Jim & Ruth
 Bixler, Tim & Kim
 Bloom, Paul
 Bolt, Millard & Nicole
 Browne, Jim & Patricia
 Bryan, Norm
 Buehrer, Roger
 Buice, Richard & Andrea
 Burch, Richard

Burkey, Ron
 Buss, Joey
 Callagher, Larry
 Camp, David
 Campbell, Larry
 Carstensen, Caryl
 Clayton, Art
 Cleaver, Joe
 Comingore, Edward
 Conner, Mike & Darla
 Crandall, Jane
 Curran, Bob
 Davidson, Mark
 Daw, William
 Doeller, Tom
 Douglas, Scott
 Duval, John & Colleen
 Dyer, Brandon
 Elkind, Bruce & Debbie
 Engel, Irv & Monica
 Esberner, Bernie
 Esquivias, R.J.
 Feenstra, Norma
 Fenrich, Eric
 Finetti, Dominick
 Foltz, Rob & June
 Formes, Bruce
 Fox, Braden
 Freleaux, Maurice
 Fynmore, John
 Gassman, Larry
 Gilbreth, Jim
 Gilliland, John & Nancy
 Goldberg, Fred
 Goldman, Marshall & Sandra
 Goldsmith, Paul
 Graham, Brent
 Gray, Warren
 Hamilton, Mark
 Handen, Joel
 Hansen, Scott
 Hanson, Alan
 Harris, Jeff
 Hartley, Rob
 Hartline, Frank & Cherie
 Hawes, John
 Heald, Gary & Loraine
 Heather, John
 Helmholtz, Don
 Herman, Shelley
 Heron, Vance
 Hill, Darrel
 Hippler, Luke
 Holt, Earle & Marianne
 Hope, Tony & Jannel
 House, Bob & Maryanne
 Howard, Norm
 Howd, Bob & Sherry
 Hunt, Dean
 Hunt, Steve
 Hunter, Chuck & Pat
 Huntsinger, Tim
 Hutchinson, Scott
 Irvine, Bryce-William
 Jantzen, Marc
 Johnson, Bill
 Johnson, Jordan
 Johnson, Ray
 Jones, Bob
 Jones, John & Kathleen

Justice, Al
 Kai, Gene & Bev
 Kaiser, Richard
 Kaufman, Adam & Cherie
 Kaufman, Dave
 Kaylor, Harry & Alice
 Kellam, Rich
 Kellogg, Pat
 Kirby, Dave & Carol
 Kleen, Willard
 Klein, Bruce & Gloria
 Klein, Ken
 Kliewer, Bill
 Knight, Wayne & Judy
 Koehnlein, Don & Denise
 Kolberg, Todd
 Koutsky, Milos
 Kramp, Gregory
 Krieger, Bill
 Krizek, John & Kay
 LaFollette, Kyle & Hattie Jo
 Lambert, Ivan
 Lapp, A Leroy
 Lawrence, Denny
 Le Roy, F. May
 Livingston, David
 Llewelyn, Richard
 Locke, David
 Logan, Mark
 Long, Larry
 Loper, Jeremy & Lara
 Lowerre, Dave & Sheila
 Madsen, Dan
 Malbrough, Jordy
 Malikowski, Ryan
 Mason, Dolph
 Mathews, Stephen
 Maxwell, Gary & Mary
 McDougald, John & Carol
 McGill, Jack
 McKinney, Collin
 Mees, Wally
 Menaker, Rob & Pat
 Menicucci, Jeff
 Merrick, Fred
 Miller, Donald
 Miller, Justin
 Minkler, John
 Mitnick, Marty
 Morketter, David
 Mueser, Dick & Lynn
 Murray, Roy
 Nelson, Don
 Niebrugge, Jackson
 Nixon, Larry & Diane
 Olmstead, Thom & Sue
 Overman, Arthur & Debbie
 Palmer, Kevin
 Pazo, Raffi & Susan
 Pence, Graham
 Pennell, Bob
 Pennycook, Patty
 Perkins, Roger
 Pfizenmeier, Dave & Julie
 Phillips, Corley & Patty
 Prather, Kirk & Stephanie
 Proweise, Tony
 Read, Ben
 Reed, Dick & Patricia
 Reid, Jack & Janet

Reule, Wally
 Rhoads, Doug
 Rhymer, Ray & Sandy
 Richardson, John
 Rivas, David
 Rodriguez, Jim
 Rosen, Phil
 Salmon, Steven
 Saputo, Pete
 Saylor, John
 Schackman, Ed
 Schroffel, Bruce
 Sellers, James & Susan
 Sellnow, Bruce & Nancy
 Senter, Nancy
 Serdahely, Jim & Olivia
 Shaffer, Bob
 Shaw, Bill & Marsha
 Sheldon, Scot
 Shepard, Kelly
 Shurtliff, Steve & Rita
 Silva, J.T.
 Singer, Tim & Laura Pallas
 Slater, Keith & Wendy
 Smith, Norman
 Smurda, John
 Snow, Austen
 Soper, John & Sharyn Soper
 Soto, Kevin
 Speckman, Fred
 Spence, G & Diane
 Spero, Rick
 Spinoso, Ray
 Starcevic, David & Christine
 Steele, Michael
 Sterbenc, Ed
 Stevens, Mel & Ruth
 Stoddard, Roger
 Stone, Joe & Barbara
 Summer, Dale
 Survive, Demaster & Hazel
 Sutherland, Jon
 Swanson, John & Maureen
 Swart, Jeff & Nancy
 Szabo, Robert & Mary Beth
 Taylor, Art
 Tillou, Frank
 Tinkle, Stan & Barbara
 Tom, Dan
 Travis, Mark
 Trenda, Cory & Janet
 Tuell, Gary
 Tuntland, Darrell
 Turner, Jim & Constance
 Vestal, Douglass
 Vincent, John
 Walker, Jerry
 Wallis, Tom
 Walsh, Pat
 Walton, Jack & Kathy
 Warner, Edward
 Weatherford, David
 Webb, Allan & Kristine
 Wilcox, Corbet & Laura
 Willard, Warren & Sharon
 Williams, Lynda
 Wines, Chuck
 Wisniewski, Ryan
 Wolf, Phillip
 Wolven, Doug

Woodson, Dennis & Betty
 Wright, John
 Yin, Burt
 Youde, Chuck
 Young, Ray
 Young, Steven
 Zuckerman, Lawrence & Alfreida

ILLINOIS (E)-95 MEMBERS

Mentor level of Membership

Claussen, Pat & Linda

Coach level of Membership

Bostick, Jim & Mary Ann

Bradley, Mark & Cheryl

Engstrom, David

Gahl, Frederick

Kingdon, Dick & Lee

Maynard, John & Marge

Schnitzler, Mike

Theile, David & Renita

Tomecek, Joseph

Welch, Ron

Wiggins, Bruce

Sponsor level of Membership

Allen, Dick & Phyllis

Anderson, Al & Susan

Bagby, Mike & Sharon

Blair, Byron & Diana

Bradley, Brad

Brown, Jim & Kathy

Buck, Stan

Burton, Don

Caccamo, Nicholas

Cain, John

Carlen, Matt

Condill, Bruce & Mary Beth

Conlin, Gery & Cheryl

Cook, Paul

Cowin, Dave

Crowther, Charlie & Pamela

Davia, Don

Davis, Gary & Karen

De Bord, Tom

Dean, Earl

Deegan, James

Dohogne, Mike

Eade, Richard

Erwin, Tom & Hortensia

Ferrier, Doug & Sanae

Giallombardo, Helen

Giallombardo, Jay & Helen

Gilmore, Jake

Gronemeyer, Jeff & Judy

Grossman, Lester & Beth

Hansen, Rich

Hess, Dick & Diane

Isely, Mike & Vicki

Jarosz, Jim & Helga

Johnson, Niel

Johnson, Wayne

Jones, Tom

Kaap, Don

Kastens, Jules

Kaufman, Gary

Keever, Ken

Khabbaz, Sany & Mary

Kinne, Andy

Knapcik, Keith

Lovell, Harry
Lundberg, Dave
Marcotte, Carrie
Martin, David
McEvilly, Tim & Jan
McQueeny, Dave
Monroe, Ray
Morris, John & Angelica
Guerrero
Morrison, John
Mulford, Brett & Sondra
Munneke, Allen
Neff, Drew
Nessler, Scott & Grace
Ota, Ken & Tomoko
Peterson, Sid
Rhoades, Bruce
Riva, Gerry
Rosborough, Keith
Schultz, Steve
Schrof, Ed
Sherman, Leigh
Smit, Don
Snygg, Mark
Stratemeyer, Mark & Anne
Styron, Harvey
Supple, Danny
Toftey, Tom
Tremble, Mark & Kathi
Ventura, Scott
Wahl, Bob
Waldorf, Jim
Warren, Gordy & Patricia
Williams, David
Woodward, Dan & Jan
Zinkel, Robert

Champions of Tomorrow level of Membership

Boom! Shakalaka

Arizmendi, Joshua
Patrick, Evan
Sell, David
Serrecchia, Nick

JOHNNY APPLESEED (G)-170 MEMBERS

Mentor level of Membership

Jenkins, Joe & Barbara
Bruning
Kracker, Dave & Diane
Morris, Mike
Ninnemann, Gene
Pistner, Ron
Rothwell, John & Teresa
Coach level of Membership
Anderson, Don & Marlene
Belka, Dave & Jan
Bernard, Bill & Jeannette
Chaffin, Kenneth
Clunies, Jon
Cook, Lee
Foisy, Chris & Meghan
Gray, Don & Cindy Weygandt
Harris, Keith
Hilsinger, Garrett
Hopper, Matt
Merrill, Jim
Miller, Buzz & Marcia
Polofka, John
Price, Andrew

Schilberg, Glenn & Betty
Sherlock, Jim
Stark, James
Udeck, Bob & Diane
Watson, Doug & Carolyn
Witmer, Joe
Zimmerman, Clair & Karen
Sponsor level of Membership
Accetta, Ryan
Aiello, Paul
Alcorn, George
Andres, Jim & Beth
Ankrom, Alexa
Anthony, Michael & Robert
Batteiger
Baker, Richard
Beaudry, H. David
Bell, Jon
Bond, Larry
Boston, Robert
Brant, Dan & Karen
Castiglione, Dennis & Suzi
Chapple, Karl & Nancy
Christ, Mark & Margaret
Coleman, Paul & Margie
Conrad, Denny & Sylvia
Cook, Bob & Cindy
Cooperider, Enos
Courts, Bari & Carolyn
Craze, Mike & Judy
Cunningham, Tom
Daum, Denny & Carol
Davis, Chuck
Deal, Glendon & Janice
Denino, George
Dickman, Chuck & Jean
Dobbins, Ken
Dombrosky, Richard & Lisa
Downey, Phil
Dudash, Dick
Duker, John
Edwards, Billy
Eley, Bob
Ellerhorst, Gary & Robin
Engler, Louis
Evans, Bill & Betty
Flinn, Darryl & Meredith
Flock, Don
Fraleigh, Joe
Fritz, John & Barb
Fry, Jim & Belen
Gehm, Jeff
Gibson, Bob & Josie
Gongaware, Josh
Gordon, John & Jackie
Hadsell, Alan & Carol
Hardy, Tom & Debra Garverick
Hawkins, Steve
Hazlett, Michael & Carol
Heilshorn, Mike
Henry, Bill & Katherine
Hoffmann, Edward
Hopkins, Paul
Hopper, Cherisse
Hornung, Charles & Ruby
Howard, Rick
Hrabar, Bob & Stacey
Iben, John & Linda
Jackson, Ernie
Jarrell, Ryan

Jewett, Walter
Johnson, David & Jo Ann
Kapes, Willard
Kaspar, John & Karen
Keller, Jerry & Leslie
King, Steve & Annie
Knoll, Peter
Koeller, Eric & Katha
Kujawski, Aaron
Lang, Mark
Legters, James & Patricia
Maggied, Allan & Paula
Maher, Edward & Judith
Mandator, Jake & Pat
Marquart, Zachary
Marshall, Tom & Eleanor
McClelland, Jim
McGaffick, Alan
Meinen, Bing
Meyer, Dave & Judy
Michel, Patrick
Miller, Bill
Miller, RF & Di
Mills, Bob & Geri
Moore, Robert
Nemoy, Michael
Novelly, Joe & Holli
Ondrus, Carl
Patterson, Bob
Paxton, James
Pelsor, Bayard
Phillips, Brian & Janice
Pilat, Mike
Popp, Stan & Barb
Purdy, Dennis
Raab, Tom
Ramsey, Jim & Bette
Rauch, Brandon
Reed, Bob
Riddick, Frank & Pat
Ross, Puck & Jackie
Rosser, Ron & Helen
Rubenstein, Jeff & Rebecca
Sagar, Denny & Patty
Sandmann, Fred
Schaefer, Fred & Beverly
Schaughency, Schaun & Catherine
Schmidt, Fred & Tenesha
Scott, Terry & Gwen
Seibert, Greg & Julie
Setele, Denny & Geraldine
Short, David
Smith, Verna
Starrett, Jerry & Jackie
Steele, Larry
Stephens, Rick
Stevanus, Reno
Stoll, Ray
Stoller, Jack
Stone, Raymond
Sutherland, Bill & Nell
Thaxton, Larry
Thomas, Lowell
Tomlinson, Don & Joanie
Van Hesteren, Bruce & Della
Vislosky, Michael
Wallace, Bob
Walters, Nathan & Melissa
Walther, Jim

Warner, Bud & Louise
Warner, Jamie & Catharine
Wasser, Brian & Joyce
Weaver, Lorin & Judy
Webb, Tom & Joyce
Wendell, Steven
Wheeler, Willard
White, Donald
White, Larry
Wicker, Buck
Williams, Ron
Woodrow, Woody & Sharon

LAND O'LAKES (H)-177 MEMBERS

Mentor level of Membership

Angell, Jim & Jane
Dart, Chris
Lewellen, Don & Ellen
Mangan, Steve
Pusateri, Leo
Renz, Eric
Sheldon, Roger & Carol
Teeters, Dick
Coach level of Membership
Carlotto, John
Gibson, Jerry
Kile, Jack
Larson, Curt
Meyer, Ron
Olson, Doc & Judy
Quist, Carl
Reinhardt, Clary & Mary Ann
Smith, Ty & Judy
Sylte, Dave & June
Van Gompel, Rick
Watson, Bruce

Sponsor level of Membership

Aldrich, Jeffrey
Aldrich, Steve
Anderson, Rick
Ansay, James
Asselin, Bob
Barlass, Mac
Barnard, Norm & Lynnette
Bartkowiak, Bart
Bennes, Lowell
Betts, Don
Betts, Pete & Susan
Beyer, Bruce & Jill
Blair, Mike
Blair, Paul
Boeldt, Alan
Boettcher, Paul
Bowen, David
Brawner, Bill
Britson, Chuck & Jan
Bruss, Stan & Kathy
Buss, Dave
Buss, Jon
Cannella, Bob
Carow, Brett
Chapman, Doug
Charles, Brad
Childs, Sheila
Christians, Roger
Cole, Dan & Sheila
Connor, Michael & Mickey
Corkins, Mike
Cremer, Darryl

Dahlen, John & Brenda
 David, Betty
 Derozier, Don
 Dilleit, James
 Dodds, Clint
 Doerr, Carley
 Donaldson, Alex
 Dresen, Jim
 Dreyer, David & Trudie
 Dykstra, Bob & Lou Ann
 Edgerton, Jack & Pat
 Egertson, Darrell
 Elsenpeter, Wayne & Jean
 Elsenpeter
 Emmel, Jim
 Erickson, James
 Erickson, Scott & Harriett
 Erickson, Wayne & Cathy
 Everest, Gordon
 Felton, Ken & Carol
 Foy, Jim & Kay
 Frank, Ken
 Galbraith, Brandon
 Gottschalk, Ken
 Gray, Bruce & Sue
 Griffith, Bob & Patricia
 Grohn, Allen & Gloria
 Gurr, Les
 Haataja, Frank & Joan
 Haataja, Karl
 Hall, Duane
 Hall, Tom
 Halverstadt, Mark
 Hazucha, John & Joy
 Heinen, Dale & Carolee
 Heinzen, Bill
 Helgeson, Adam
 Herbst, Jerry
 Hettinga, Don
 Hickman, Jeff
 Higgins, Jim
 Hill, Tom & Pamela
 Hughes, Wayne
 Huth, Chuck
 Hutton, Duane & Linda
 Isaacson, Alan
 Kasuboski, Mark
 Kirwin, Rich
 Kiskunas, George & Barb
 Klapper, Robert & Nance
 Kleiber, John & Josephine
 Klobuchar, Richard
 Knecht, Don
 Koehel, Clark
 Koepcke, John
 Kolstad, Sparky & Libby
 Krueger, Joel
 Kumlander, Steven
 Kutscher, William
 Langseth, Roger
 Larson, Gerald
 Lemkuil, Robert
 Lessard, Archie & Kathryn
 Lewis, Larry & Alice
 Lindquist, Rick
 Marcus, Dick & Kandace
 McKown, Charles
 McNaughton, David & Julie
 Mellem, Harlan
 Meyer, Jeff & Andi

Moe, Gordon
 Mohr, Clint
 Montgomery, Dale & Karen
 Mueller, Sean
 Mueller, Todd
 Nagel, Matt & Ann Elizabeth
 Neubert, Lee
 Olsen, Joan
 Olson, Chuck
 Ortenburger, Mark & Cathy
 Park, John
 Paschke, Dave
 Paulson, Don
 Pennings, Bill
 Peterson, Chris & Tina
 Peterson, Doug
 Pinard, Carl
 Plazek, John & Jodee
 Popelka, Mike & Rhode
 Pratt, Gary & Vicki
 Prom, Al
 Puffe, Jim
 Purvis, Johnathon
 Rasmus, Jim & Martha
 Record, Matthew
 Richards, Andy & Karen
 Riemenschneider, Dick & Marge
 Roble, Mark
 Rosevold, Gregory
 Russell, Don & Chaque
 Sayler, Ernie & Debbie
 Schmidt, James
 Schmidt, Willie
 Schmitt, Bill
 Schnabel, Steven
 Schreiter, Anthony
 Schubbe, Thom & Mary
 Schubbe, Tim
 Schuh, Duane & Dianne
 Schultz, Brian & Ellen
 Schumacher, Carl
 Seager, Nate
 Shobe, Bryan
 Sickels, Gene
 Slater, Larry
 Slattery, Dan
 Smith, Kaleb
 Sorenson, Eric & Barbara
 Speidel, Spider
 Stoller, Laura
 Swanson, Paul
 Teutschmann, Randall
 Theisen, Joe & Carol
 Tiede, James
 Treptow, Trep & Linda Sue
 TRUE, Dan
 Umhoefer, Josh
 Valentine, Dan & Jo
 Valentine, Nick & Sherry Trepp
 Vandenberg, Jim
 Veenhuis, Scott
 Veitch, Tom
 Ver Bockel, John
 Verwiebe, Arlen
 Vitale, Bruce
 Von Haden, John
 Walsh, Larry
 Wanger, Blake
 Warning, Grant & Linda

Weber, Jim
 Weber, Tom & Polly
 Weslander, Mark & Cindy
 White, John
 Whitehouse, Whitey
 Whitlock, Cody
 Wideman, Dan
 Wilcox, Mark & Krista
 Wilson, Warren
 Wolfe, John
 Wozniak, Bob & Pat
 Zeien, Paul
 Ziebell, Rob
 Zimmerman, LeRoy & DiAnn
**Champions of Tomorrow
 level of Membership**
Croix Four
 Blegen, Adam
 Delikowski, Adam & Emily
 Hall, Matt
 Roeber, John and Karen

MID-ATLANTIC (J)-436 MEMBERS

Mentor level of Membership

Berger, Bob & Donna
 Blount, Al & Melissa
 Gabler, Barry
 George, Dan & Mary
 Harner, Chuck
 Hunter, Chuck & Ramadan
 Caysever
 Johnson, Ross & Susan
 Williams
 Lewellen, Richard & Christina
 Maderazo, John
 May, Bill
 McFarland, Sam
 Neal, Rollie
 Pratt, Walt Pratt
 Schellhamer, Bob & Brenda
 Sitter, Raymond
 Toffey, Bill & Kathy
 Wallenborn, White

Coach level of Membership

Bova, Jim
 Byram, Chas
 Carroll, Charlie
 Culotta, Chuck
 Deitch, Andy & Maritess
 Ehrisman, Sharon
 Ewin, Jim
 Fogle, Bob
 Grimes, Gerry & Abbie
 Haynes, Vinny
 Heer, Roger & Linda
 Hibbs, Norm & Heidi
 Ives, David
 Landolt, David & Marilouise
 McCook, Dennis
 Murphy, Bob
 Nestlerode, Howard & Ruth
 Ann
 Obermeyer, Ron
 Patton, Daniel & Silvia
 Petro, Tony
 Prevost, Terry & Kim
 Rack, Bob
 Rosenbloom, Art
 Sawin, Steve & Roni

Shelly, Pat
 Shipp, Frank & Susan
 Steinhart, Jeff
 Volpetti, Louis
 Walsh, Tom & Margaret
 Weiner, Tony & Nora
 Wiener, Tom & Louise
 Wile, Alan & Patricia
 Williams, Susan
 Wunsch, Ken
Sponsor level of Membership
 Ades, Louis
 Albinson, Kenneth & Joyce
 Aldinger, Bruce
 Allen, Brian
 Althof, Kyle
 Alworth, John & Jacqueline
 Ammerman, Brian & Christina
 Ammirata, Dave
 Anderton, Alan
 Arnett, Ed & Nina
 Ashford, Philip
 Baepier, Walter & Holly
 Baguley, Mike & Jo
 Bailey, David & Ginger
 Bailey, George
 Baker, Ron
 Bankart, William
 Banker, Stephen & Susan
 Barker, Bruce & Valerie
 Barranger, TJ
 Barrett, Jim
 Barrett, Nate
 Bartell, Stephen
 Bartholomew, Bob
 Bauer, Tony
 Baum, Pete & Beth
 Beard, Carroll
 Beasley-Topliffe, Keith
 Bell, Michael
 Belzer, Casey
 Berger, Buzz
 Berlin, Gregory & Sandy
 Berlin, Sheryl
 Blair, Joe
 Boersma, Karel & Lynda
 Borden, Ed & Nancy
 Botelle, Jim
 Bowen, Kenneth & Sue
 Brandt, Ron & Dorothy
 Bratis, Ron
 Britson, Stephanie
 Brookreson, Joe
 Brown, Phillip & Marian
 Brown, Ryan
 Buckley, Paul & Paula
 Burger, Rich & Sue
 Burke, Barry & Margee
 Bush, Chris
 Butala, Mark & Linda
 Butterfield, Jay & Anne
 Byers, Dave & Patricia
 Byrd, Bill & Jill
 Calabria, Philip & Suzanne
 Candrilli, Jerry & Marlene
 Carroll, Dean & Tess
 Cederberg, Arnie & Virginia
 Celani, John
 Chambers, Bill
 Chambers, William

Champion, James
 Chouinard, Gerard
 Ciccione, Joseph & Felice
 Clare, Nicholas
 Clark, Bill & Eleanor
 Coakley, Ray
 Collins, Russ
 Colosimo, Bill & Linda
 Contzius, Erik & Monica
 Conway, Fred & Lesley
 Cotton, Austin
 Covert, Gary
 Crider, Rick
 Dangel, Dick
 Davis, Arlan
 Davis, Barry
 Davis, Gregory
 Davis, Jed
 Day, William
 De Bruin, Tom
 Dean, Rob
 Deasy, Kevin & Charleen
 Dechiaro, Joe & Joy
 Degan, Tom
 Dehner, Gene
 Dempsey, Joe
 Denzler, Chas
 Devine, Hugh & Bernice
 Devine, Sean
 DeVoe, Scott
 DiSalvo, Joe & Joanne
 Doniger, Matt & Rebecca
 Conner
 Downey, Will
 Doyle, Ernie
 Dubivsky, Mark
 Duggan, Larry & Margaret
 Dukart, Gary & Marlene
 Dunie, Stephen
 Eberius, Bill & Doris
 Echan, Clayton & Alberta
 Edison, Mike
 Ehrlich, Ken & Louise
 Emmer, Michael & Marjorie
 Endy, Daniel & Elyse
 Erb, Earl
 Evans, Al & Joanie
 Evans, Ike
 Fagerheim, Ken & Judith
 Failor, Jim
 Farabaugh, Don
 Farris, Linsy
 Fedarko, Frank & Kitty
 Ferreira, Andy
 Fisher, Bob & Carol Smith
 Fisher, Fish & Jean
 France, Robert
 Franek, Paul
 Freeman, Francis & Geraldine
 French, Charles
 Friedlander, Kenneth
 Friel, Jim
 Fuller, Drew
 Furrow, Ron
 Gallagher, Jim
 Gardner, Jack
 Garling, Scipio
 Geipel, Mike & Lennie
 Geldon, Fred & Anne
 Gillespie, Ralph

Gingrich, Ken & Barbara
 Giovannitti, Ernest
 Glemboski, Jeff
 Gordon, Brian
 Graham, Gordan
 Gray, Richard
 Graybill, Dick
 Greene, Jon
 Greif, Richard & Victoria
 Guterbock, Tom
 Guy, Steve
 Hacker, Kevin & Vesna
 Halac, Rick & Sharon Lee
 Halley, Tom & Donna
 Hamrick, Chuck
 Harbove, David
 Hardy, Alan & Laurie
 Harrington, Mitchell
 Harris, Michael
 Hart, Bud
 Hastings, Bob & Julianna
 Hawkins, Dennis
 Hawthorne, Jim & Pearl
 Heginbotham, Erland
 Heine, Walt
 Hench, Mr. & Mrs. Seth Hench
 Herr, Fran
 Herrick, Jim
 Herring, Ed & Meg
 Hertz, Kellen
 Hilfker, Frank & Jean
 Hill, Jim & Linda
 Ho, Michael
 Hobart, George
 Horstman, Lu Ann
 Horton, Tyler
 Howard, Glenn & Angela
 Howard, Kathy
 Hubbard, Bert & Carol
 Huber, Chris & Judy
 Huisenga, Ron
 Humes, Harry
 Hvidding, Jim
 Iturbides, Vick
 Ives, Ken
 Jefferson, Frank
 Johnson, Bert
 Johnson, Brian
 Jones, Bradley
 Jones, Doug
 Jones, Richard
 Jones, W Hardman
 Jordan, Bruce & Carol
 Jordan, Terry & Ginger
 Jordan, Tom & Kathy
 Kahl, Dean
 Kaiser, Kevin
 Kane, Ed
 Kauffmann, Carl & Kathy
 Kaufman, Lyn
 Keady, Joe & Jane
 Kealy, Tom
 Kellogg, Larry
 Kellogg, Neal
 Kelly, David & Mary Rose
 Kempton, Dean & Marilynn
 Kenney, Katherine
 Kent, Gregory
 Kindred, Jerry
 Kirkland, Jim

Kirschner, Frank
 Klaiss, Ron
 Klemmer, Eric & Maryann
 Knueven, John
 Koch, Wayne
 Korch, George
 Kriebel, Bob
 Kruse, Bill & Kathleen
 Kuethe, Will
 Kushto, Will & Karen
 Lacquement, Dick & Alice Ann
 Lance, David & Gillian
 Landon, Tom & Sue
 Langston, Rob
 LaTurno, Ray
 Laufer, Alex & Margaret
 Laumann, Bud
 Lausch, Sundae
 Lazear, Randy
 Leaver, Bill
 Lemieux, Roger
 Lido, Vic
 Liebknecht, Pat
 Lilly, Larry
 Liptak, Ray & Barbara
 Louis, Arthur
 Lower, Chuck
 Ludwig, Ed
 Lund, Carl & Maria
 Lynch, Vince & Stacey
 MacDonald, Paul
 Macgowan, Mac & Carol
 Manfre, Louis
 Mann, Donald
 Margolis, Barney
 Marshall, Harold
 Martin, Chuck & Mary Ellen
 Martin, Paul
 Mastrull, Brian
 Matthew, Matt & Gita
 McConagha, Dave
 McDonald, Bill & Gail
 McGregor, Ralph
 McGrew, Palmer
 McKeever, Chuck
 McKenzie, Kevin
 Melton, Larry
 Mendez, Stephen
 Merritt, Bill
 Millilo, Tony
 Miller, Larry & Judy
 Millerick, Jack
 Minnick, Bruce
 Mitchell, Sandy
 Moller, Randy
 Monfils, Mike
 Montgomery, Rick & Jan
 Morrison, Noah
 Morton, Fred
 Murane, Steven
 Murtha, Bat & Andrea
 Myers, Don
 Nanes, Kal
 Neff, Ann
 Neff, George
 Nelsen, Mike & Georgia
 Nelson, David
 Newton, Bryan
 Nicharot, Lou
 Nowak, Jay & Susan

Nutt, Robert
 Obier, William
 O'Donovan, J C
 Ondish, John & Patricia
 Owen, Vic
 Page, Craig
 Parr, Jerry & Marina
 Patricia, John & Joan
 Paulhamus, Ken
 Payton, Rich
 Pearce, Don
 Peck, Thomas
 Peters, Fred
 Peterson, Tim & Adria
 Picarello, John & Maryann
 Pinto, Jack & Olga
 Pollard, Johnny
 Poplaski, Amber
 Poremsky, Matt
 Porter, Jeff
 Post, Boyd
 Prevatt, Tim
 Price, Doug
 Purdin, Joe
 Ramsey, Bob
 Ranieri, Al
 Reckenbeil, Don & Cathi
 Ressler, Shaun
 Rhome, Bob & Anne
 Rittenhouse, Walter
 Roberts, Tom & Maria
 Root, Chuck
 Ruppert, Dave & Barbara
 Russell, Ed & Alice
 Salvino, Kregg & Cindy
 Saunders, Jim & Joyce
 Savage, Rick
 Salvalza, Mike
 Schlott, Mike
 Scullin, Terry
 Seelinger, George & Patricia
 Seibert, Dude
 Sekula, Ed
 Sellman, Bob
 Servidio, Joe
 Servidio, Joe
 Shaffern, Justin & Ashley
 Sharpe, Chuck & Cheryl
 Shunk, Bill
 Sigwart, Frank & Claire
 Silverstein, Mike & Roseanne
 Simolin, George
 Skolnick, Steve & Donna
 Smith, Bruce & Jane
 Snowman, Jeff
 Snyder, Allen
 Sobrio, Dan
 Spangler, Jim & Barbara
 Spoerke, Glenn
 Sponseller, Howie & Kathryn
 Stamps, Mick
 Stauffer, Bill
 Stewart, Tom
 Stich, Philip
 Stojowski, Steve
 Stueve, Burt
 Sultan, Raymond
 Sutton, John
 Taber, John
 Tallant, Shawn & Joanne

Taylor, Jim & Judith
 Tellis, Ian
 Thayer, Brad
 Thomas, Bob & Martha
 Thompson, Gene & Loretta
 Tilton, Bill & Barbara
 Todd, Ronald
 Toth, Jim
 Tyson, Tom & Maria
 Van Gilder, Noah
 Van Note, Herb
 Vingelli, Louis
 Wadley, Edward
 Wagner, Al
 Wagner, Paul
 Wagner, Rick & Peggy
 Walker, Ray
 Watters, Jack
 Watts, Aaron
 Weber, John
 Weinberg, Alan
 Weiss, Larry
 Welter, Dave
 Westberg, Johan
 Westin, Jan-Ake
 White, Doug & Michelle
 White, Linden
 Whitehaus, Lori Jo
 Whitney, David
 Wienand, Jeffrey
 Wilderotter, Phil
 Wilkins, Ross
 Williams, Dan & Linda
 Williams, Gwyn & Deborah
 Smith
 Williams, Ira
 Williamson, Jim & Judy
 Wilson, George & Judy
 Wilson, Tom
 Wise, Joseph
 Wlazlowski, Ed
 Wolff, Richard
 Wolff, Robert
 Wolpoe, Rich
 Wood, Cy
 Woolwine, Gene
 Zimmerman, John
 Zink, Frank

NORTHEASTERN (K)~185 MEMBERS

Mentor level of Membership

Anderson, Gene
 Fritzen, Ed & Michele
 Lane, Walt & Sandra
 Moss, Larry
 Nortz, Mike
 Patterson, David
 Robillard, Dan
 Sullivan, Scott
Coach level of Membership
 David, Judith
 Dyer, Steve & Pamela
 Eaker, Chuck
 Hutchinson, Dave & Carol
 Klein, Michael
 Larochelle, Larry & Mary Ann
 Lenehan, Richard
 McGonegal, Bill
 Moore, Fred & Ellen Corrigan

O'Malley, Tony & Marianne
 Pierce, David & Avery
 Rogers, Will
 Weatherbee, Theresa
 Wright, Bill & Sue
Sponsor level of Membership
 Adelman, Wally
 Anderson, Barbara
 Anderson, Danny
 Andrews, David & Alexandra
 Arico, Peter & Betty
 Arnone, Paul & Carmen
 Azzaro, Steven
 Barnard, Robb
 Barrows, Gran
 Barry, Rich
 Batton, Sam
 Batton, Tom
 Bayer, Andy
 Bernard, Bob & Jean
 Billings, Howard
 Blackstone, Russ
 Bourbeau, Dick
 Bowen, Jim
 Bowes, Bob
 Boynton, Stan
 Bradway, Terry & Jeff
 Brazie, Reesie
 Brooks, Emmy
 Brunner, Jim & Judy
 Buerklin, Norm
 Burger, George
 Burgess, Edward & Nancy
 Burke, Bob
 Carlson, Don
 Church, Charlie
 Cilley, Art & Charlotte
 Clauer, Lynn
 Coates, Diane
 Coates, Jim
 Costello, Dan
 Daley, Robert & Carole
 Dalo, Joe
 Dalton, Roger
 Damon, Cotton
 Davis, Don & Lois
 Degan, Bill
 DeMerchant, Larry & Dianne
 Dickens, Jeff
 Donovan, Dan
 Dowling, Walt
 Dubray, Gil
 Duplessie, Wally & Faith
 Eastman, Brian
 Englander, John
 Falcone, Dan & Meg
 Farmer, Tom & Patricia
 Farnham, Bob & Jane
 Farrell, Jim
 Farrington, Arnie & Rita
 Feinberg, George
 Fitzgerald, Pete
 Forsythe, Peter
 Frosh, Frosty & Bettie Jayne
 Furtado, Andrew & Mary Ellen
 Gervais, Richard
 Gifford, Edward
 Goebel, Bill
 Grant, Joe & Jenna
 Green, Russ

Greenberg, Paul
 Gross, Kim
 Gustafson, Al & Gloria
 Hackett, Wayne & Betty
 Hadigan, John
 Haley, Sally
 Hall, Chris
 Halpern, Eric
 Harrison, Warner
 Hayes, Don & Nancy
 Heines, Jesse & Bonnie
 Hopper, Jim & Marti
 Horhota, Steve
 Hunt, Miles
 Israel, Raymond
 Jensen, Chris & Randy Rosette
 Jolie, Don
 Joy, Ed & Amy
 Keith, Ronald
 Kendrick, Cy
 Kew, Jim
 Kiviat, Greg
 Kolda, Scott
 Kopka, Joe & Shirley
 Kraft, Phil & Peach
 Kugler, Jordan
 Lamson, Todd & Jennifer
 Landry, Robert & Sharyn
 Larson, Corbit
 Lee, Doug
 Lind, Don
 Little, Jerry
 Lively, Art & Natalie
 Lombardi, Antonio
 Long, Doug
 Loring, Steve & Sylvia
 Maino, Mike
 Malone, Joe
 Marino, Joe
 Marstaller, David
 Mason-Osann, Tim
 Massa, Sebbi
 McCarter, Duane
 McCurdy, Ross
 McQueeney, Tom & Nan
 McSwiggin, Peter
 Medina, John
 Meissner, Bob & Pat
 Menard, Ronnie & Linda
 Mercier, Matt
 Milgram, Jerry
 Moriarty, Dick
 Morse, Ian
 Moscovitch, Ed
 Munnis, Rick
 Murphy, Roger
 Nachbar, Duke
 Noble, Linda
 Oberg, Eric
 O'Connell, Steve & Amy
 Sweeney
 O'Connor, John
 Palonen, Chris
 Pero, Edward
 Peterson, Douglas
 Prior, Mark & Abby
 Rashid, Stanley & Mai
 Reichert, Chris & Tenille
 Richards, John
 Riedel, Dick

Romanchuk, Jim & Rebecca
 Round, Scott
 Rubano, Ron
 Ruff, Bob
 Salamin, Steve & Abby
 Sandstrom, Harald
 Sargent, Albert & Mary Lou
 Hoffman
 Sblendido, Frank & Barbara
 Secrest, Scott
 Selander, Bill
 Shea, Dick
 Sutherland, Joel
 Taylor, Bradford
 Taylor, Sam
 Topka, Terry
 Tortorelli, Dianne
 Tramack, Dave & Jerilyn
 Trimby, Trim & Peggy
 VanArsdale, Russ
 Verrill, Wendell
 Viens, Ernie & Gloria
 Wagner, Marshall
 Washington, Steven
 White, Tom & Rose
 Wiley, Jay
 Williams, Ray
 Wistrom, Jerry & Maria
 Wood, Peter & Amelia
 Woodhouse, John & Kathleen
 Wybieracki, Paul

PIONEER (I)~145 MEMBERS

Mentor level of Membership

Dininsky, Bob & Rosemary
 Kill, Don
 Perry, Charlie & Diane
 Phillips, Fred & Kelly

Coach level of Membership

Berry, Chris
 Ditto, Jerry & Cathy
 Hanson, Dale
 Kreun, Chuck
 Kutter, Dave & Diane
 McLaren, Randy & Maria
 Martin, Charlie
 McAndrew, Bill & Carol
 Meyer, Gary & Bonnie
 Rayburn, Jeff
 Slamka, Don & Staci
 Sturdy, Ray
 Sutherland, Stephen
 Wilson, Aaron

Sponsor level of Membership

Bammert, Bob
 Bax, Ed & Patricia
 Berry, Earl & Mimi
 Berry, Sterling & Anne
 Blackstone, Tom
 Blanchard, John
 Bonn, Jeff
 Boyer, Roger & Judy
 Branch, Gary
 Brook, Roger & Pat
 Bulka, Gene
 Burnham, Rex
 Carey, Jamie
 Carinci, Art
 Carlson, Ray & Catherine

Chirgwin, Marty
 Cole, Alan
 Coombs, Alan
 Cordle, Chris
 Cowlshaw, John
 Czupinski, Dave
 Dake, Clifton
 Davidson, Roger & Dolores
 Dixon, Bob
 Doyle, George
 Dumbauld, Ted & Marilyn
 Dunckel, Brian & Pat
 Eagles, Jack
 Ennis, Tom & Betty
 Evans, Curtis & Jean
 Fisk, Al & Bonnie
 Frucci, Jack & Pam
 Fuller, Jerry
 Genzlinger, Brent
 George, Barry
 Gray, Bob & Sandra
 Grogan, Jim & Barbara
 Guldin, Dave
 Gurney, Roy
 Hall, James
 Hall, Jay & Lisa
 Harrell, Cody
 Hartman, Jimbo & Kathy
 Hartrick, Dick & Mary Beth
 Hartrick, Mike
 Hatch, Charles
 Heaton, Hylon
 Hensel, Elena
 Hodde, Darin & Michelle
 Holm, Roger & Janet
 Horton, Don
 Howe, Paul
 Hunting, Bruce
 Jackson, George
 Jerzyk, Ben
 Jonasz, Bruce
 Jones, Dave & Linda
 Kauppila, Walt
 Keiser, Paul
 Kemp, David & Loretta
 Keys, Carrie
 Kramb, Bob
 Kramb, Mike & Janice
 Lamkin, Jim & Sandra
 Lane, Art
 Lawrence, Stan
 Ledwith, Don
 Levitt, Donald & Julia
 Lewis, Roger & Sue
 Lewis, Steve & Kimberlie
 Maglionie, Louis
 Mann, Doc
 Markham, Jeff & Dawn
 Matson, Michael & Martha
 Maxfield, Bill & Nancy
 McCaffrey, Bob
 McCardell, Craig
 McCaskey, Roger
 Milkie, Gerald
 Moerdyk, Charles
 Monroe, Gary & Patricia
 Monte, Scott
 Moss, Greg
 Moyer, Mike & Kathy
 Netherthon, Charles

Northey, John
 Nugent, Neil & Linda
 O'Dell, James & Jennifer
 Olesen, Jeff
 Oliver, Tim & Marcia
 Ouzoonian, Lud
 Parker, Larry & Carole
 Peters, Earle
 Peterson, Jay
 Pettigrew, Rob
 Phillips, Russ
 Proffitt, Michael
 Rayburn, David
 Reinour, Mike
 Ryan, Hugh
 Schlee, Dick
 Schulte, Tony
 Scott, Kel
 Serwach, Joe
 Shaver, Toby & Emilee
 Smith, Al & Cynthia
 Snoddy, Duane & Diane
 Steider, Adam
 Stephens-Brown, Pete
 Stiegemeyer, John & Grace
 Stutts, William
 Summers, Kathryn
 Szewc, John & Elaine
 Taphouse, Gene
 Terpe, Donald
 Teuber, Jack & Mary
 Todd, Joel
 Turner, Scott & Kristin
 VanWestrienen, John
 Weaver, Douglas & Lynn
 Weaver, Maude
 Webner, Terry & Barbara
 Whitten, Jim & Terese
 Williams, RT & Leah
 Willox, Iain & Jennifer
 Windak, James
 Wissinger, Denny & Ruth Ann

ROCKY MOUNTAIN (S)-117 MEMBERS

Mentor level of Membership

Mosser, Sandi
 Skaiff, Mike & Shauna
 Wilton, Bill
Coach level of Membership
 Gibson, Joe
 Holt, Andy
 Homan, JR
 Jackson, Gray & Becki
 Kennedy, Mike
 McWilliams, David & Sandy
 Nafziger, Ralph & Judi
 Plass, Robert
 Pomasl, Chris
 Ratcliff, Hal
 Salcetti, Bob
 Szymanski, Lon
 Taylor, John & Lynn
 Waddell, David

Sponsor level of Membership

Abelein, Rex & Anne
 Allred, Scott & Brenna
 Andromidas, Mark
 Arnold, Richard & Marty
 Arrington, Doug & Mandy

Arrington, Jamie & Tina
 Asmus, Chelsea
 Asmus, James
 Baker, Jerrold
 Balsley, Toby
 Barlow, Paul
 Biffle, Bill & Lillian
 Biffle, John
 Bosveld, Duane & Cindy
 Bracken, Gary
 Bray, Roger & Betty
 Bruce, Beth
 Burgener, Robert
 Carlson, Oly & Diane
 Christiansen, Nathan & Lise
 Clouser, Ben & Carol
 Colby, David & Mary
 Collins, Farris
 Darling, Jim & Eileen Sharkey
 Dawson, Tom
 Didier, Paul
 Dockter, Vern & Lindalin
 Donley, Howard & Joanne
 Dover, Paul & Deana
 Duckett, Bob & Janet
 Edquist, Tom & Linda
 Edwards, David
 Elving, John & Barbara
 Erlander, Phil & Dee
 Feller, Kim & Sherry
 Fitzgerald, Ed & Joan
 Foster, Brett
 Fowler, Jill
 Franklin, George & Sally
 George, Dan
 Gregg, Ben
 Hayhurst, Glenn
 Henson, Bruce & Nancy
 Hoffman, Geoffrey & Tammie
 Hoffman, Mark
 Hooper, Jerry & Marilyn
 Hoskins, David & Sandy
 Hudson, Hal & Carolyn
 Humfield, George & Diana
 Hutchison, Jim
 Hyland, Pete & Phyllis
 Johnson, Daniel & Lauren
 Johnston, David
 Jones, Doug
 Kauffman, Keith & April
 Keltner, Ned
 Kinney, Jack
 Levy, Chuck
 Little, Fred
 Lockhart, Tracy
 Maen, Jeffrey
 Mammarella, George
 Martin, William
 Mason, Fred
 Megow, John
 Melville, Tom
 Mero, Ken & Susan
 Middleton, Phil & Pat
 Muelle, Robert & Mary
 Mullen, Jeffrey & Connie
 Myers, David & Dorothy
 Nelson, Arlo & Judy
 Newton, Tom & Connie
 Niles, William & Wanda
 Nish, Devon

Nogrady, Michael
 Norman, Douglas
 Norris, Dave & Kay
 Ostler, Blake & Elena
 Phillips, Rich & Ellen
 Preston, J.C. & Judy
 Quintana, Jerry
 Romine, Dick & Maureen
 Sachs, William & Kay
 Schacht, Bear
 Schiller, Ron
 Schoemer, Jim & Susan
 Shaw, Jeffrey
 Shuster, Cy
 Simons, Ed
 Wakefield, Michael
 Whalen, Gilbert
 White, Al & Nancy
 Wiesner, Del & Kay
 Winters, Bruce & Marsha
 Wisdom, Vic

Champions of Tomorrow level of Membership

Storm Front

Clark, Jim and Rhonda
 Drown, Darin and Jenny
 Libsack, Syd and Abby
 Selano, Jeff and Mary

SENECA LAND (M)-53 MEMBERS

Mentor level of Membership

Barickman, Jim & Peg

Coach level of Membership

Bell, Nathan
 Bender, David & Deborah
 Camp, Terry
 Chorney, Craig & Mary
 Frank, Peter
 Honeyman, Mike & Jomary
 Sabol, Mac

Sponsor level of Membership

Allen, Michael
 Azzam, George
 Bahr, Glen
 Bailey, Wayne
 Ball, George
 Berenguer, Skip & Susan
 Bergner, Louis & Lorna
 Bleiberg, Peter & Christine
 Browne, Joseph
 DeMartino, Matt
 Drake, Don & Jody
 Einhart, Eddie & Grace
 Evans, Don
 Fabian, John
 Fruth, Matt & Connie
 Hart, Pete
 Harter, Chuck
 Hunter, Al & Astrid
 Jones, Tom
 King, Bob
 Knickerbocker, Jerry
 Lalli, Bob
 Larson, Gary & Jamie
 Lewis, David
 Lindsay, Edwin & Carol
 Lyons, Edward & Betty
 Mahan, Paul
 Mamula, Milosh

Marmelstein, Phil
 Martin, Stephen & Nancy
 Moore, Brian
 Nicholson, David
 Norton, Dan
 Notaro, Andrew
 Nuijens, Dave
 Rawcliffe, Jim & Gail
 Reyes, Tito
 Ritchey, Thomas
 Rohlin, Bill
 Rowlands, Bim & Marion
 Schoonover, John & Wendy
 Talada, Butch & Kathy
 Tesseyman, Francis
 Volk, Thomas
 Zelows, Chaz

SOUTHWESTERN (N)-165 MEMBERS

Mentor level of Membership

Brounoff, Nick and Barbara
 Cook, Dwight
 Duff, Will
 Elliott, Brian
 Fleming, Jeff & Jane-Ann
 Hasbrook, Pete
 Hooten, Daniel
 Mignoli, Frank
 Moore, Alan
 Rehus, Ron & Carol
 Swaney, Joseph

Coach level of Membership

Brown, Hiram & Natasha
 Good, Ben
 Hess, Greg
 Hughes, Ivan & Wanda
 Johnsrud, Steven & Laurie
 Little, Jeffery & Daniela
 Lunday, Duane & Margaret
 McDonald, Andy
 Monroe, Scott & Rhonda
 Moxley, Pete & Karen
 Pinkston, Allan & Doris
 Poynor, Ken & Dolores
 Reifsnnyder, Jeff
 Roman, David & Becky
 Scott, Jerry
 Senstock, Martin
 Shepard, John
 Skinner, Jan & Bernie
 Smith, Austin
 Stancil, Robert
 Thurston, Jeff & Pat

Sponsor level of Membership

Abbott, Brett & Naomi
 Allenberg, Jack
 Anderson, Philip
 Arbuckle, Bob & Peggy
 Bartells, Paul & Sharon
 Bartholomew, Anthony &
 Stephanie
 Barton, Jerry
 Bastian, Lloyd
 Baylor, Scott & Carrie
 Baylor, Zach
 Bean, Clarke
 Beasley, Max
 Beck, John & Kathleen
 Bergenstock, Ron

Bergmann, Tom & Angela
 Bird, Tim
 Blackshear, Harold
 Bonesio, Mickey & Michael
 Boston, Fred
 Brannon, Liz
 Bratcher, Laylan
 Buell, Bart
 Campbell, Jacob
 Caswell, Nicholas
 Chafetz, Ronald
 Connel, John & Lisa
 Cooper, Daniel
 Cooper, Dwayne & Barbara
 Cox, Bob
 Crow, Iva Jean
 Davidson, Huggy & Martha
 De Moor, Tom
 Derksen, Arthur & Nell
 Dilling, Timm
 Dunklau, Bill & Brenda
 Ebsen, Richard & Donna
 Engelbrecht, Irv
 Finklea, Hugh
 Fly, Larry
 Foris, Nan
 Frederick, Marcia
 Garrett, Jenn
 Glass, Wendell & Rhonda
 Glenn, Dennis & Lisa
 Goerdel, Tim & Angela
 Graham, Socko
 Greene, Jerry & Lyrice
 Gutschke, Nathan & Dawn
 Hammer, Hank
 Hammons, Michel
 Hannah, Gary & Donna
 Hardgrave, Charles
 Harris, Michael
 Henderson, Caleb
 Hintermaier, Bob
 Holdeman, Mark & Lindsay
 Chartier
 Hoofnagle, Joe
 Hopkins, Bryce
 Hopper, Alan
 Howard, Ed & Jessica
 Huff, Dave & Patricia
 Hurwitz, Lonny
 Hutcheson, William
 Ives, Bob & Shelia
 James, Don & Elaine
 Jordan, Kirk
 Josephson, Al
 Klein, Steve
 Kuborn, John
 Lafler, Seth
 Lodge, Michael
 Loerch, Wally
 Lunden, K C
 Marston, Jeremy
 Martinez, Jonathan
 McCullough, Robert
 McDonald, John & Joan
 Bergstrom
 McRae, Joel & Emilie
 McShan, Phillip
 Mealey, Matt & Jeanne
 Morton, Gary & Mary Ann
 Moses, Jim

Newcomb, Kim
 Nichols, Clark & Susan
 Nienstadt, Ryan & Cheri
 Olson, Jason
 Patterson, Jim
 Penn, Bill
 Pennington, Anthony
 Phelps, Pat & Janis
 Pickard, Tom & Krista
 Prince, Drew
 Rea, Joel
 Riley, Damon & Anita
 Robinson, Robby
 Rudd, Jim
 Ruiz, Nick
 Rundquist, Jane
 Russell, Charles & Carolyn
 Sadosky, Brian
 Sartor, Michael
 Schneider, John & Lucy
 Seay, Beverly
 Seher, Ron
 Sense, Gregory
 Simmons, Scott & Glenna
 Taylor, C. Martin
 Teel, Benjamin & Ariel
 Tenczar, Bob & Nancy
 Tett, Hub & Pam
 Todd, Glenn & Kay
 Trees, Bill
 Trevino, Dan
 Turner, Aaron
 Turner, Paul & Mari
 Vaughn, John
 Warschauer, Jason & Cindy
 Weick, David
 Westover, George & Karen
 Weynand, John & Sharon
 White, Rodney & Melody
 Wilson, Dennis & Peggy
 Winder, Will & Rose
 Winn, Mark & Amy
 Young, Steve

Champions of Tomorrow

level of Membership

Silver Statesmen

Cadwell, Don
 Dove, Richard and Betty
 Hoge, Jim
 Wiegmann, Paul

Upscale

Chapman, Dave & Marcey
 Ehrhorn, Dan
 Smith, Bill
 Wisbrock, Mat

SUNSHINE (P)-224 MEMBERS

Mentor level of Membership

Cadwell, Don
 Butler, Gordon & Donna
 McKinnon, Jim & Nancy
 Waller, Bob

Coach level of Membership

Bame, Dick
 Bensburg, Bill & Vicki
 Brinkmann, Dan & Barbara
 Buehler, Jeff
 Carnahan, Ron & Pat
 Clancy, Matt

Doheny, Dave & Dorothy
 Fitzpatrick, Jim
 Ford, Bill & Betty
 Geers, Don
 Haley, Pat & Jan
 Hanover, Paul & Marcia
 Harnish, John & Jan
 Helbig, Arnie & Denise
 James, Ron
 Jones, Rosey & Barbara
 Kirkpatrick, Don
 Kopelke, Lee
 Lamberti, Dominic
 Mastrangelo, Al & Barbara
 Miller, Don
 Moritz, Chris & Judy
 Parrish, Randy & Vicki
 Quinn, Bob
 Richards, Dave
 Scully, Don
 Snyder, Stirling
 Tirk, Bob & Ann
 Vockell, Bill & Sonia
 Wilson, Kevin & Jonna
 Zentner, Thom

Sponsor level of Membership

Alexander, John & Margaret
 Amaral, Mark
 Banek, Merle
 Barnes, Don & Debbie
 Barry, Richard & Maureen
 Barton, Dan
 Becker, Jared
 Bekkenhuis, Paul & Andrea
 Bennett, Gerry
 Bergstrom, Lee & Sara
 Blomeley, Stan & Charity
 Borts, Andrew & Dale
 Bourdeau, Ernie & Lynda
 Brozovich, Wayne & Celeste
 Brunger, Robbie
 Buckner, Ken & Hollie
 Burns, Joseph
 Busko, Jim & Cyd
 Carter, Jay
 Castanien, Jim
 Codner, Ray & Sherry
 Colleran, Bill & Valerie
 Cooley, Reuben & Connie
 Court, Dick
 Cullen, Bill & Ginger
 Cuniff, Sky & Lanita
 Cunningham, Larry
 David-Sivelle, Adrien
 De Angelis, Carmen & Patricia
 Decker, Tom & Jennifer
 Deignan, Daniel
 Detwiler, Det & Elizabeth
 Dobson, Howard
 Donohoe, Fran & Barbara
 Doughton, Connie
 DuBois, Bill & Mitzi
 Dudley, Ron
 Eastlake, Dave
 Eckert, Roy & Shirley
 Eustice, Jim
 Feaster, Chris & Sharon
 Felver, Jack
 Fenton, Tim
 Firth, David & Jerri

Firth, Nicholas
 Fischer, Dick & Rosalyn
 Fisher, Gary
 Fitzgerald, Daniel & Pamela
 Fleming, John & Rita
 Fowler, Chris
 Ganjamie, Charlie & Susan
 Gape, Ray
 Gehrlein, Jim & Susan
 Gerould, Lon
 Gipp, George & Cathie
 Given, Jimmy
 Glass, Brenda
 Gonon, Pat
 Gordon, Dick & Beverly
 Greiner, Jim
 Griesemer, Bob & Lynn
 Grieser, Al & Mary
 Grillone, Adam
 Gruber, Gabriella
 Hall, Manson
 Hankins, Tom
 Harrington, Scott
 Henry, Don
 Henry, Sue
 Hesketh, Ron & Joyce
 Hixson, Bob & Gena
 Hobson, J. Harvey
 Hogshead, Tom
 Hughes, Robert & Cherie
 Hunt, Joe & Linda
 Hyre, Marc
 Jacobs, Dave & Cassie
 Jacobsen, Steve
 Johnson, Reed
 Katsoff, Sheldon & Susan
 Kemnetz, Frank & Susie
 Kendig, Bill
 Kirkpatrick, Howard
 Knight, John & Fran
 Krupka, Wally & Linda
 Ladd, Jim
 Lambert, Don & Lynn Lambert
 Lankes, Robert & Kimberly
 Lavelly, Chazz
 LeBleu, Jim & Brinda
 Lee, Jason
 Leon, Lee & Patricia
 Lester, Dave
 Linzy, Michael & Mary Alice
 Lord, Lucas
 Lubin, Lance & Mary Jean
 Lujan, Andrew
 Lux, Gretchen
 Magnus, Allen & Linda
 Mailhotte, Leo
 Mann, David
 Marino, Mike & Mary Evelyn
 Mather, Chuck
 Matheson, Rick
 McCoy, Gene & Margaret
 McCreary, Clare & June
 McDonald, Johnny & Susan
 McElravy, James & Judy
 McGoff, John
 Mendez, Kevin
 Meyncke, Don & Mary Lou
 Milligan, Mark
 Morin, Rick
 Mower, Les

Mullen, Keith
 Murray, Charlie
 Nantz, Harold
 Nitz, Gale & Lee
 Nuss, John
 Olesen, Jeffry
 Ott, William & Laverne
 Owens, Chris & Lana
 Palmer, Jim & Faith
 Parker, Dave & Marilynn
 Pascoe, Russ
 Pfeifer, Joe
 Polk, Bob & Patti
 Prince, Bruce
 Pritchard, Milt & Marjorie
 Rafe, Ann
 Ray, Charles & Barbara
 Reeves, Robert
 Reinmiller, Rich
 Reynolds, Jeremy & Barbara
 Richards, Dave & Barbara
 Richards, John
 Riches, Dave & Barbara
 Rocklein, Joe & Betty Lou
 Rodgers, Chris
 Rohrs, Ronald
 Romaine, John & Sandra
 Ropp, Arlan
 Rose, Bob & Midge
 Rosen, Steve
 Ross, Bruce & Ann
 Russell, Howdy & Teresa
 Sardo, Dave
 Schafer, Roger
 Schmidt, Ray
 Schubert, Dave & Karen
 Shearer, Joseph & Angela
 Shellhammer, Glen & Sue
 Shubert, James & Kathleen
 Shuss, Greg & Laurie
 Simmons, John & Sara
 Slamka, Jack
 Slaney, Bob & Amy
 Smith, Michael & Elspeth
 Smith, Mike & Amy
 Solomon, Charles
 Stenback, Jan
 Stevenson, Mike
 Storms, Jim
 Stromenger, Hank
 Swanson, Joel & Marion
 Swenson, Chuck
 Tarlton, Mike
 Thau, Bob & Rose
 Thayer, Reg
 Tinney, Art & Jan
 Tsark, Paul & Teresa
 Van de Mark, Bart & Gail
 Van Ryswyk, Gary & Ethel
 Wagner, Larry & Donna
 Wakefield, Bob
 Wantuck, Ken
 Ward, Bill
 Ward, Jason
 Warmanen, Phil & Angele
 Werner, Scott
 Whitcomb, Bob & Edna
 Whittlesley, Paul
 Willcox, Paul
 Williams, Dick

Williams, Tom
 Williams, Willy
 Winkelmann, Bill
 Wise, Dean & Patricia
 Wollerman, Wayne & Laurie
 Wahnner
 Woodrow, Woody

FRANK THORNE (T)-2 MEMBERS

Sponsor level of Membership

Boettge, Viveka
 Hendel, John

Sing Canada - 117 members

Mentor level of Membership

Fisher, Ken

Coach level of Membership

Briand, Alan

Fulton, Rob

Holt, Jeff

Moker, Gord

Puls, David

Sponsor level of Membership

Achtmichuk, Mike

Alain, Alphonse

Allen, Gerry

Arnold, Chris

Arnold, Juanita

Beattie, Fred

Belchamber, Frank

Belchamber, Pat

Berry, Dale

Billard, Raye

Billo, Jeff

Bird, Guy

Boan, Jack

Bond, Dave

Bright, Michael

Cameron, Brian

Carr, Dick

Casselman, Harold

Clarke, Donald

Cleather, Ed

Collinson, Wendy

Conley, Geoffrey

Currie, Leslie

Devereux, Paul

Devonshire, Ted

Down, Elmer

Dueck, Erwin

Durward, Scott

Earle, Dave

Ebers, Robert

Essex-McIntyre, James

Filyk, Gloria

Finnbogason, Ken

Freedman, Laurie

Garrett, Walter

Gibson, Bob

Gray, Harry

Gross, Art

Hamilton, Lynne

Hendry, George

Hendry, Pat

Hiilchey, Joel

Hilko, Linda

Hughes, Marjorie

Fred Janzen

Jones, Maurice

Knox, Grant
 Langille, Joan
 LeFort, Helen
 Leitch, John
 Livingston, Linda
 Lynch, Bernie
 MacDonald, Rob
 MacGregor, Duncan
 MacLean, Doug
 Malinis, Anita
 McAlpine, Judy
 McCann, Andrew
 Mendler, Elizabeth
 Miles, Gary
 Mirhady, David
 Munro, Barry
 Murray, Joe
 Parkinson, Bob
 Petch, Doug
 Pinch, Frank
 Pitcher, Joyce
 Rask, Neil
 Risley, Jane
 Robertson, Doug
 Robichaud, Judy
 Robson, Bob
 Rootes, James
 Rutherford, Bob
 Sanderson, Brian
 Seedhouse, Jack
 Selkirk, Gerry
 Shackleton, Andrew
 Siegel, Charlie
 Simpson, Howard
 Sinclair, Blake
 George Smellie
 Smith, Rob
 Sutherland, Lorna
 Sutton, June
 Taiton, Marcel
 Thielking, Bruce
 Tibbutt, Ed
 Vandervart, Brian
 Wagg, Paul
 Weber, Douglas
 Werling, Katherine
 Wilson, Jim
 Yates, Gary

Champions of Tomorrow level of Membership

Back In Time

Charlton, Max
 Madill, Ron
 O'Donnell, Peter
 Smith, Ron

In-Four-Mation

Hall, Steve
 Mistern, John
 Moorcroft, Boyd
 Young, Bob

Intrigue

Bezaire, Dan
 Grimes, Tom
 Grimmel, Rob
 Wilson, Rick

Lamajano

Hatlet, Marv
 Riddle, Norm
 Rootes, Larry
 Seedhouse, Jack

NOTES



THE BEST
BARBERSHOP EXPERIENCES
KEEP GETTING BETTER

WWW.BARBERSHOP.ORG/ORANGECOUNTY



ALL EVENTS HELD AT THE STUNNING
**Segerstrom Center
for the Arts**

CARIBBEAN GOLD



VOCAL SPECTRUM

CROSSROADS

INTERSTATE RIVALS

THE BUZZ

JULY 8 - 15 2018

PORT CANAVERAL, FL

DEPARTS FOLLOWING THE BHS CONVENTION

DWEAVE@COMCAST.NET 616-706-3287 CARIBBEANGOLDCRUISE.COM